

For Research Use Only

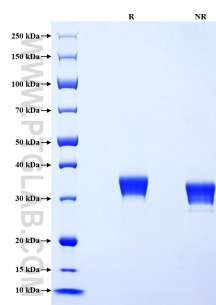
Recombinant Mouse EpCAM/CD326 protein (His Tag)



Catalog Number: Eg1883

Basic Information	Species: Mouse	Purity: >90 %, SDS-PAGE	Tag: His Tag
Technical Specifications	<p>Purity: >90 %, SDS-PAGE</p> <p>Endotoxin Level: <0.1 EU/ µg protein, LAL method</p> <p>Source: HEK293-derived Mouse EpCAM protein Gln24-Thr266 (Accession# Q99JW5) with a His tag at the C-terminus.</p> <p>GeneID: 17075</p> <p>Accession: Q99JW5</p> <p>Predicted Molecular Mass: 28.7 kDa</p> <p>SDS-PAGE: 31-36 kDa, reducing (R) conditions</p> <p>Formulation: Lyophilized from 0.22 µm filtered solution in PBS, pH 7.4. Normally 5% trehalose and 5% mannitol are added as protectants before lyophilization.</p>		
Biological Activity	Not tested		
Storage and Shipping	<p>Storage: It is recommended that the protein be aliquoted for optimal storage. Avoid repeated freeze-thaw cycles.</p> <ul style="list-style-type: none">• Until expiry date, -20°C to -80°C as lyophilized proteins.• 3 months, -20°C to -80°C under sterile conditions after reconstitution. <p>Shipping: The product is shipped at ambient temperature. Upon receipt, store it immediately at the recommended temperature.</p>		
Reconstitution	Briefly centrifuge the tube before opening. Reconstitute at 0.1-0.5 mg/mL in sterile water.		
Background	<p>Epithelial cell adhesion molecule (EpCAM, CD326) is a type I transmembrane glycoprotein that functions as a homophilic, epithelial-specific intercellular cell-adhesion molecule. In addition to cell adhesion, EpCAM is also involved in cellular signaling, cell migration, proliferation, and differentiation. EpCAM is highly expressed on most carcinomas and therefore of potential use as a diagnostic and prognostic marker for a variety of carcinomas, and has become a therapeutic target. EpCAM may occur in distinct forms due to glycosylation.</p>		
References	<ol style="list-style-type: none">1. Bernardina T F van der Gun, et al. (2010) Carcinogenesis. Nov;31(11):1913-21.2. Graham Carpenter, Monica Red Brewer. (2009) Cancer Cell. Mar 3;15(3):165-6.3. Carlo Patriarca, et al. (2012) Cancer Treat Rev. Feb;38(1):68-75.4. Sannia Imrich, et al. (2012) Cell Adh Migr. Jan-Feb;6(1):30-8.5. Christof Pauli, et al. (2003) Cancer Lett. Apr 10;193(1):25-32.		
Synonyms	CD326, EGP314, Epcam, Ep-CAM, Epithelial cell adhesion molecule		

Selected Validation Data



Purity of Recombinant Mouse EpCAM was determined by SDS-PAGE. The protein was resolved in an SDS-PAGE in reducing (R) and non-reducing (NR) conditions and stained using Coomassie blue.

For technical support and original validation data for this product please contact

T: 027-87531629

E: Proteintech-CN@ptglab.com

W: ptgcn.com

This product is exclusively available under Proteintech Group brand and is not available to purchase from any other manufacturer.