

For Research Use Only

# Recombinant Human KIR2DL2 protein (rFc Tag)



Catalog Number: Eg1695

## Basic Information

**Species:**  
Human

**Purity:**  
>90 %, SDS-PAGE

**Tag:**  
rFc Tag

## Technical Specifications

**Purity:**

>90 %, SDS-PAGE

**Endotoxin Level:**

<0.1 EU/  $\mu$ g protein, LAL method

**Source:**

HEK293-derived Human KIR2DL2 protein His22-His245 (Accession# P43627) with a rabbit IgG Fc tag at the C-terminus.

**GeneID:**

3803

**Accession:**

P43627

**Predicted Molecular Mass:**

50.9 kDa

**SDS-PAGE:**

55-75 kDa, reducing (R) conditions

**Formulation:**

Lyophilized from 0.22  $\mu$ m filtered solution in PBS, pH 7.4. Normally 5% trehalose and 5% mannitol are added as protectants before lyophilization.

## Biological Activity

Not tested

## Storage and Shipping

**Storage:**

It is recommended that the protein be aliquoted for optimal storage. Avoid repeated freeze-thaw cycles.

- Until expiry date, -20°C to -80°C as lyophilized proteins.
- 3 months, -20°C to -80°C under sterile conditions after reconstitution.

**Shipping:**

The product is shipped at ambient temperature. Upon receipt, store it immediately at the recommended temperature.

## Reconstitution

Briefly centrifuge the tube before opening. Reconstitute at 0.1-0.5 mg/mL in sterile water.

## Background

KIR2DL2 is one of killer cell immunoglobulin-like receptors, which are transmembrane glycoproteins expressed by natural killer cells and subsets of T cells. KIR proteins with the long cytoplasmic domain transduce inhibitory signals upon ligand binding via an immune tyrosine-based inhibitory motif (ITIM), while KIR proteins with the short cytoplasmic domain lack the ITIM motif and instead associate with the TYRO protein tyrosine kinase binding protein to transduce activating signals. The ligands for several KIR proteins are subsets of HLA class I molecules; thus, KIR proteins are thought to play an important role in regulation of the immune response (PMID: 36719466; 22022261; 9577090).

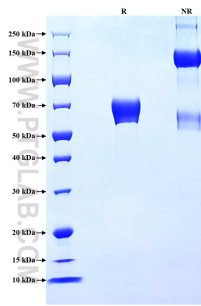
## References

1. Mora-Bitria L. et al. (2023). Immunogenetics. 75(3):269-282.
2. Seich Al Basatena NK. et al. (2011). PLoS Pathog. 7(10):e1002270.
3. Mingari MC. et al. (1998). Immunol Today. 19(4):153-157.

## Synonyms

CD158 antigen-like family member B1, CD158b1, Killer cell immunoglobulin-like receptor 2DL2, Natural killer-associated transcript 6, NKAT6

## Selected Validation Data



Purity of Recombinant Human KIR2DL2 was determined by SDS-PAGE. The protein was resolved in an SDS-PAGE in reducing (R) and non-reducing (NR) conditions and stained using Coomassie blue.

For technical support and original validation data for this product please contact

T: 027-87531629

E: [Proteintech-CN@ptglab.com](mailto:Proteintech-CN@ptglab.com)

W: [ptgcn.com](http://ptgcn.com)

This product is exclusively available under Proteintech Group brand and is not available to purchase from any other manufacturer.