

For Research Use Only

# Recombinant Mouse IL-1 beta protein (His Tag)



Catalog Number: Eg1577

## Basic Information

**Species:**  
Mouse

**Purity:**  
>90 %, SDS-PAGE

**Tag:**  
His Tag

## Technical Specifications

**Purity:**

>90 %, SDS-PAGE

**Endotoxin Level:**

<0.1 EU/  $\mu$ g protein, LAL method

**Source:**

HEK293-derived Mouse IL-1 beta protein Val118-Ser269 (Accession# P10749) with a His tag at the N-terminus.

**GeneID:**

16176

**Accession:**

P10749

**Predicted Molecular Mass:**

18.5 kDa

**SDS-PAGE:**

17-18 kDa, reducing (R) conditions

**Formulation:**

Lyophilized from 0.22  $\mu$ m filtered solution in PBS, pH 7.4. Normally 5% trehalose and 5% mannitol are added as protectants before lyophilization.

## Biological Activity

Not tested

## Storage and Shipping

**Storage:**

It is recommended that the protein be aliquoted for optimal storage. Avoid repeated freeze-thaw cycles.

- Until expiry date, -20°C to -80°C as lyophilized proteins.
- 3 months, -20°C to -80°C under sterile conditions after reconstitution.

**Shipping:**

The product is shipped at ambient temperature. Upon receipt, store it immediately at the recommended temperature.

## Reconstitution

Briefly centrifuge the tube before opening. Reconstitute at 0.1-0.5 mg/mL in sterile water.

## Background

Interleukin-1 is a pro-inflammatory cytokine with multiple biological effects. The IL-1 gene family encodes three proteins: IL-1 $\alpha$ , IL-1 $\beta$  and their naturally occurring inhibitor IL-1RN. Interleukin 1 $\beta$  (IL-1 $\beta$ ), mainly produced by blood monocytes and tissue macrophages, has been implicated in mediating both acute and chronic inflammation. IL-1 $\beta$  is known to be involved in a variety of cellular activities, including cell proliferation, differentiation and apoptosis. IL-1 $\beta$  is emerging as a key mediator of carcinogenesis that characterizes host-environment interactions.

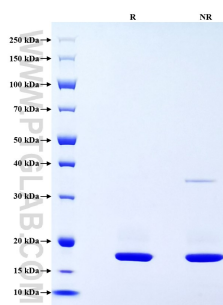
## References

1. Dinarello CA. et al. (1996). Blood. 87: 2095-147.
2. Bird S. et al. (2002). Cytokine Growth Factor Rev. 13: 483-502.
3. Xu J. et al. (2013). PLoS One. 21;8(5):e63654.
4. McCarty S. (2014). Cardiol Rev. 22: 176-81.

## Synonyms

IL 1beta, IL-1 beta, Il1b, IL 1 beta, IL 1b

## Selected Validation Data



Purity of Recombinant Mouse IL-1 beta was determined by SDS-PAGE. The protein was resolved in an SDS-PAGE in reducing (R) and non-reducing (NR) conditions and stained using Coomassie blue.

For technical support and original validation data for this product please contact

T: 027-87531629

E: [Proteintech-CN@ptglab.com](mailto:Proteintech-CN@ptglab.com)

W: [ptgcn.com](http://ptgcn.com)

This product is exclusively available under Proteintech Group brand and is not available to purchase from any other manufacturer.