

Recombinant Mouse ALCAM protein (His Tag)

Catalog Number: Eg1524

Basic Information

Species:
Mouse**Purity:**
>90 %, SDS-PAGE**Tag:**
His Tag

Technical Specifications

Purity:

>90 %, SDS-PAGE

Endotoxin Level:

<0.1 EU/ µg protein, LAL method

Source:

HEK293-derived Mouse ALCAM protein Trp28-Lys527 (Accession# Q61490) with a His tag at the C-terminus.

GeneID:

11658

Accession:

Q61490

Predicted Molecular Mass:

57.2 kDa

SDS-PAGE:

60-85 kDa, reducing (R) conditions

Formulation:

Lyophilized from 0.22 µm filtered solution in PBS, pH 7.4. Normally 5% trehalose and 5% mannitol are added as protectants before lyophilization.

Biological Activity

Not tested

Storage and Shipping

Storage:

It is recommended that the protein be aliquoted for optimal storage. Avoid repeated freeze-thaw cycles.

- Until expiry date, -20°C to -80°C as lyophilized proteins.
- 3 months, -20°C to -80°C under sterile conditions after reconstitution.

Shipping:

The product is shipped at ambient temperature. Upon receipt, store it immediately at the recommended temperature.

Reconstitution

Briefly centrifuge the tube before opening. Reconstitute at 0.1-0.5 mg/mL in sterile water.

Background

Activated leukocyte cell adhesion molecule (ALCAM, also known as CD166) is a cell adhesion molecule that belongs to the immunoglobulin superfamily. It is involved in cell-cell adhesion through homophilic and heterophilic (to CD6) interactions. ALCAM is widely expressed in a variety of normal tissues. Altered ALCAM expression has been associated with the differentiation state and progression in some neoplasms including melanoma, prostate, colorectal, and breast cancers.

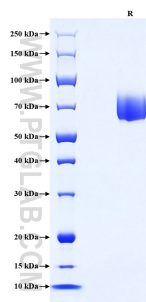
References

- 1.Hong X, et al. (2010) J Surg Oncol. 101(7):564-9.
- 2.Ihnen M, et al. (2008) Breast Cancer Res Treat. 112(3):419-27.

Synonyms

Activated leukocyte cell adhesion molecule, BEN, CD166, CD166 antigen, Protein DM-GRASP

Selected Validation Data



Purity of Recombinant Mouse ALCAM was determined by SDS-PAGE. The protein was resolved in an SDS-PAGE in reducing (R) conditions and stained using Coomassie blue.

For technical support and original validation data for this product please contact

T: 027-87531629

E: Proteintech-CN@ptglab.com

W: ptgcn.com

This product is exclusively available under Proteintech Group brand and is not available to purchase from any other manufacturer.