

For Research Use Only

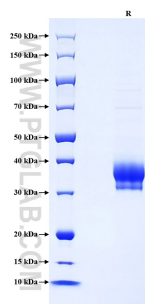
Recombinant Mouse SIGNR1/CD209b protein (His Tag)



Catalog Number: Eg1497

Basic Information	Species: Mouse	Purity: >90 %, SDS-PAGE	Tag: His Tag
Technical Specifications	<p>Purity: >90 %, SDS-PAGE</p> <p>Endotoxin Level: <0.1 EU/ µg protein, LAL method</p> <p>Source: HEK293-derived Mouse SIGNR1 protein Gln74-Gly325 (Accession# Q8CJ91-1) with a His tag at the N-terminus.</p> <p>GeneID: 69165</p> <p>Accession: Q8CJ91-1</p> <p>Predicted Molecular Mass: 30.3 kDa</p> <p>SDS-PAGE: 30-40 kDa, reducing (R) conditions</p> <p>Formulation: Lyophilized from 0.22 µm filtered solution in PBS, pH 7.4. Normally 5% trehalose and 5% mannitol are added as protectants before lyophilization.</p>		
Biological Activity	Not tested		
Storage and Shipping	<p>Storage: It is recommended that the protein be aliquoted for optimal storage. Avoid repeated freeze-thaw cycles.</p> <ul style="list-style-type: none">• Until expiry date, -20°C to -80°C as lyophilized proteins.• 3 months, -20°C to -80°C under sterile conditions after reconstitution. <p>Shipping: The product is shipped at ambient temperature. Upon receipt, store it immediately at the recommended temperature.</p>		
Reconstitution	Briefly centrifuge the tube before opening. Reconstitute at 0.1-0.5 mg/mL in sterile water.		
Background	<p>SIGNR1 (CD209b) is a mouse homolog of the human DC-SIGN receptor. SIGNR1 is a type II transmembrane protein with an extracellular domain consisting of a neck region made up of four repeats of 28 amino acids and a carbohydrate recognition domain. It is expressed on marginal zone macrophages and peritoneal macrophages and is a key receptor for the recognition and efficient clearance of pathogens by the innate immune system.</p>		
References	<ol style="list-style-type: none">1.Park CG, et al. (2001) Int Immunol. 13(10):1283-90.2.Lanoue A, et al. (2004) J Exp Med. 200(11):1383-93.		
Synonyms	CD209, CD209 antigen-like protein B, Cd209b, DC-SIGNR1, DC-SIGN-related protein 1		

Selected Validation Data



Purity of Recombinant Mouse SIGNR1 was determined by SDS-PAGE. The protein was resolved in an SDS-PAGE in reducing (R) conditions and stained using Coomassie blue.

For technical support and original validation data for this product please contact

T: 027-87531629

E: Proteintech-CN@ptglab.com

W: ptgcn.com

This product is exclusively available under Proteintech Group brand and is not available to purchase from any other manufacturer.