

For Research Use Only

Recombinant Rat KLRB1A/CD161a protein (rFc Tag)



Catalog Number: Eg1466

Basic Information

Species:
Rat

Purity:
>90 %, SDS-PAGE

Tag:
rFc Tag

Technical Specifications

Purity:

>90 %, SDS-PAGE

Endotoxin Level:

<0.1 EU/ μ g protein, LAL method

Source:

HEK293-derived Rat KLRB1A protein Arg64-Ser223 (Accession# P27471) with a rabbit IgG Fc tag at the C-terminus.

GeneID:

362443

Accession:

P27471

Predicted Molecular Mass:

44.3 kDa

SDS-PAGE:

50-65 kDa, reducing (R) conditions

Formulation:

Lyophilized from 0.22 μ m filtered solution in PBS, pH 7.4. Normally 5% trehalose and 5% mannitol are added as protectants before lyophilization.

Biological Activity

Not tested

Storage and Shipping

Storage:

It is recommended that the protein be aliquoted for optimal storage. Avoid repeated freeze-thaw cycles.

- Until expiry date, -20°C to -80°C as lyophilized proteins.
- 3 months, -20°C to -80°C under sterile conditions after reconstitution.

Shipping:

The product is shipped at ambient temperature. Upon receipt, store it immediately at the recommended temperature.

Reconstitution

Briefly centrifuge the tube before opening. Reconstitute at 0.1-0.5 mg/mL in sterile water.

Background

CD161, also known as KLRB1 or NKR-P1A, is a type II transmembrane C-type lectin-like receptor and is expressed on the cell membrane as disulfide-linked homodimer. It is expressed by the majority of NK cells and subsets of peripheral T cells, including both CD4+ and CD8+ T cells, and is expressed preferentially on adult T cells with a "memory" antigenic phenotype. Expression of CD161 correlates with the cytotoxic function of CD16+ NK cells, and ligation of CD161 with its ligand LLT1 inhibits NK cell cytotoxicity and cytokine secretion.

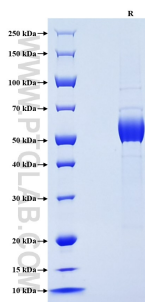
References

- 1.Lanier LL, et al. (1994) J Immunol. 153(6):2417-28.
- 2.Fergusson JR, et al. (2011) Front Immunol. 2:36.
- 3.Kurioka A, et al. (2018) Front Immunol. 9:486.

Synonyms

Antigen 3.2.3, CD161 antigen-like family member A, CD161a, Killer cell lectin-like receptor subfamily B member 1A, Klr1a

Selected Validation Data



Purity of Recombinant Rat KLRB1A was determined by SDS-PAGE. The protein was resolved in an SDS-PAGE in reducing (R) conditions and stained using Coomassie blue.

For technical support and original validation data for this product please contact

T: 027-87531629

E: Proteintech-CN@ptglab.com

W: ptgcn.com

This product is exclusively available under Proteintech Group brand and is not available to purchase from any other manufacturer.