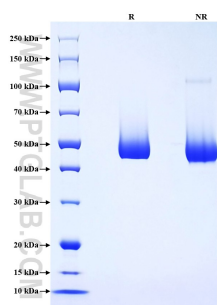


Recombinant Human Serpin F1/PEDF protein (His Tag)

Catalog Number: Eg1152

Basic Information	Species: Human	Purity: >90 %, SDS-PAGE	Tag: His Tag
Technical Specifications	<p>Purity: >90 %, SDS-PAGE</p> <p>Endotoxin Level: <0.1 EU/ µg protein, LAL method</p> <p>Source: HEK293-derived Human Serpin F1 protein Gln20-Pro418 (Accession# P36955) with a His tag at the C-terminus.</p> <p>GeneID: 5176</p> <p>Accession: P36955</p> <p>Predicted Molecular Mass: 45.4 kDa</p> <p>SDS-PAGE: 45-55 kDa, reducing (R) conditions</p> <p>Formulation: Lyophilized from 0.22 µm filtered solution in PBS, pH 7.4. Normally 5% trehalose and 5% mannitol are added as protectants before lyophilization.</p>		
Biological Activity	Not tested		
Storage and Shipping	<p>Storage: It is recommended that the protein be aliquoted for optimal storage. Avoid repeated freeze-thaw cycles.</p> <ul style="list-style-type: none">• Until expiry date, -20°C to -80°C as lyophilized proteins.• 3 months, -20°C to -80°C under sterile conditions after reconstitution. <p>Shipping: The product is shipped at ambient temperature. Upon receipt, store it immediately at the recommended temperature.</p>		
Reconstitution	Briefly centrifuge the tube before opening. Reconstitute at 0.1-0.5 mg/mL in sterile water.		
Background	<p>Serpin F1, also known as Pigment Epithelium-Derived Factor (PEDF) or Cell Proliferation-Inducing Gene 35 Protein (PIG35), is a multifunctional protein that belongs to the serpin family. This family of proteins is characterized by their highly conserved core structure, which is critical for their function as serine protease inhibitors. Serpin F1 is secreted and has been shown to strongly inhibit angiogenesis, making it a potent inhibitor of blood vessel growth. It also has anti-tumor and neurotrophic functions, playing a significant role in various biological processes including cell differentiation, tumor suppression, and neuronal protection. Serpin F1 is expressed in quiescent cells and has been implicated in the regulation of gene expression and cellular proliferation.</p>		
References	<ol style="list-style-type: none">1. J A Huntington. et al. (2011). J Thromb Haemost. 1:26-34.2. Law RH. et al. (2006). Genome Biol. 7: 216.3. Kaslik G. et al. (1997). Biochemistry. 36:5455-5464.4. Huang X. et al. (2011). J Biol Chem. 286: 8740-8751.		
Synonyms	PEDF, PIG35, Cell proliferation-inducing gene 35 protein, EPC 1, EPC-1		

Selected Validation Data



Purity of Recombinant Human Serpin F1 was determined by SDS-PAGE. The protein was resolved in an SDS-PAGE in reducing (R) and non-reducing (NR) conditions and stained using Coomassie blue.

For technical support and original validation data for this product please contact

T: 027-87531629

E: Proteintech-CN@ptglab.com

W: ptgcn.com

This product is exclusively available under Proteintech Group brand and is not available to purchase from any other manufacturer.