

Catalog Number: Eg1092

Basic Information

Species:
Rat**Purity:**
>90 %, SDS-PAGE**Tag:**
His Tag

Technical Specifications

Purity:

>90 %, SDS-PAGE

Endotoxin Level:

<0.1 EU/ µg protein, LAL method

Source:

HEK293-derived Rat SCF protein Gln26-Ala189 (Accession# P21581-1) with a His tag at the C-terminus.

GeneID:

60427

Accession:

P21581-1

Predicted Molecular Mass:

19.1 kDa

SDS-PAGE:

20-33 kDa, reducing (R) conditions

Formulation:

Lyophilized from 0.22 µm filtered solution in PBS, pH 7.4. Normally 5% trehalose and 5% mannitol are added as protectants before lyophilization.

Biological Activity

Not tested

Storage and Shipping

Storage:

It is recommended that the protein be aliquoted for optimal storage. Avoid repeated freeze-thaw cycles.

- Until expiry date, -20°C to -80°C as lyophilized proteins.
- 3 months, -20°C to -80°C under sterile conditions after reconstitution.

Shipping:

The product is shipped at ambient temperature. Upon receipt, store it immediately at the recommended temperature.

Reconstitution

Briefly centrifuge the tube before opening. Reconstitute at 0.1-0.5 mg/mL in sterile water.

Background

Stem cell factor (SCF) also known as mast cell growth factor, steel factor, and kit ligand, is a hematopoietic growth factor. SCF is a critical protein with key roles in the cell such as hematopoiesis, gametogenesis and melanogenesis. SCF activates multiple signal pathways by binding with c-kit receptor. SCF and its receptor, c-kit ligand (KL), are up-regulated in particular human malignancies including gastrointestinal stromal tumor (GISTs), breast cancer, hematopoietic cell, myeloid leukaemia, and glioma. The SCF/c-KIT system also plays a relevant role in cell fate decision, and its activity is widely known to control cell proliferation, differentiation, survival and apoptosis.

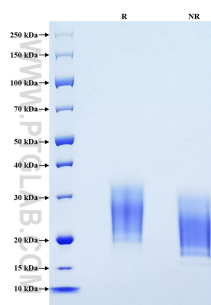
References

1. Gu Y, et al. (2011) PLoS One. 6(10):e25984.
2. Pedersen M, et al. (2008) Biochem Biophys Res Commun. 377(1):98-103.
3. Talaiezhadeh A, et al. (2012) Contemp Oncol (Pozn). 16(4):306-9.
4. Bai CG, et al. (2012) World J Gastroenterol. 18(23):2929-37.
5. Lennartsson J, et al. (2012) Physiol Rev. 92(4):1619-49.
6. Liang J, et al. (2013) Int J Biol Sci. 9(5):435-43.

Synonyms

Kitlg, KIT ligand, KitL, Mgf, SCF

Selected Validation Data



Purity of Recombinant Rat SCF was determined by SDS-PAGE. The protein was resolved in an SDS-PAGE in reducing (R) and non-reducing (NR) conditions and stained using Coomassie blue.

For technical support and original validation data for this product please contact

T: 027-87531629

E: Proteintech-CN@ptglab.com

W: ptgcn.com

This product is exclusively available under Proteintech Group brand and is not available to purchase from any other manufacturer.