

For Research Use Only

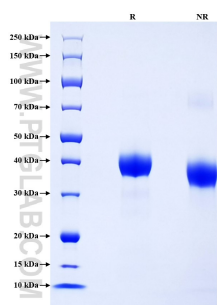
Recombinant Human Cathepsin B protein (His Tag)



Catalog Number: Eg1020

Basic Information	Species: Human	Purity: >90 %, SDS-PAGE	Tag: His Tag
Technical Specifications	<p>Purity: >90 %, SDS-PAGE</p> <p>Endotoxin Level: <0.1 EU/ μg protein, LAL method</p> <p>Source: HEK293-derived Human Cathepsin B protein Arg18-Ile339 (Accession# P07858) with a His tag at the C-terminus.</p> <p>GeneID: 1508</p> <p>Accession: P07858</p> <p>Predicted Molecular Mass: 37.5 kDa</p> <p>SDS-PAGE: 37-45kDa, reducing (R) conditions</p> <p>Formulation: Lyophilized from 0.22 μm filtered solution in PBS, pH 7.4. Normally 5% trehalose and 5% mannitol are added as protectants before lyophilization.</p>		
Biological Activity	Not tested		
Storage and Shipping	<p>Storage: It is recommended that the protein be aliquoted for optimal storage. Avoid repeated freeze-thaw cycles.</p> <ul style="list-style-type: none">• Until expiry date, -20°C to -80°C as lyophilized proteins.• 3 months, -20°C to -80°C under sterile conditions after reconstitution. <p>Shipping: The product is shipped at ambient temperature. Upon receipt, store it immediately at the recommended temperature.</p>		
Reconstitution	Briefly centrifuge the tube before opening. Reconstitute at 0.1-0.5 mg/mL in sterile water.		
Background	Cardiovascular diseases persist as a major threat to human health. Cathepsin B (CTSB), a ubiquitous lysosomal cysteine protease, participates in a multitude of physiological processes and plays a pivotal role in the progression of diverse pathological conditions. CTSB, a member of the C1 family, is extensively expressed in various tissues and cell types throughout the body, often referred to as a housekeeping enzyme.		
References	<ol style="list-style-type: none">1.Liu F.et al.(2024) Eur J Med Chem.269:116329.2.Turk V.et al.(2012) Biochim Biophys Acta.1824(1):68-88.3.Ruiz-Blazquez P.et al.(2021) J Heaton.75(5):1192-1202.4.Ketterer S.et al.(2017) FEBS J.284(10):1437-1454.5.Liu CL.et al.(2018) Nat Rev Cardiol.15(6):351-370.		
Synonyms	CTSB, APP secretase, APPS, Cat B, cathepsin B		

Selected Validation Data



Purity of Recombinant Human Cathepsin B was determined by SDS-PAGE. The protein was resolved in an SDS-PAGE in reducing (R) and non-reducing (NR) conditions and stained using Coomassie blue.

For technical support and original validation data for this product please contact

T: 027-87531629

E: Proteintech-CN@ptglab.com

W: ptgcn.com

This product is exclusively available under Proteintech Group brand and is not available to purchase from any other manufacturer.