

For Research Use Only

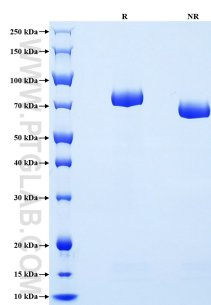
Recombinant Human Lactoferrin/LTF protein (His Tag)



Catalog Number: Eg0888

| Basic Information | Species: Human | Purity: >90 %, SDS-PAGE | Tag: His Tag |
|--------------------------|---|----------------------------|-----------------|
| Technical Specifications | <p>Purity: >90 %, SDS-PAGE</p> <p>Endotoxin Level: <0.1 EU/ μg protein, LAL method</p> <p>Source: HEK293-derived Human Lactoferrin protein Gly20-Lys710 (Accession# P02788-1) with a His tag at the C-terminus.</p> <p>GeneID: 4057</p> <p>Accession: P02788-1</p> <p>Predicted Molecular Mass: 77 kDa</p> <p>SDS-PAGE: 70-90 kDa, reducing (R) conditions</p> <p>Formulation: Lyophilized from 0.22 μm filtered solution in PBS, pH 7.4. Normally 5% trehalose and 5% mannitol are added as protectants before lyophilization.</p> | | |
| Biological Activity | Not tested | | |
| Storage and Shipping | <p>Storage: It is recommended that the protein be aliquoted for optimal storage. Avoid repeated freeze-thaw cycles.</p> <ul style="list-style-type: none">• Until expiry date, -20°C to -80°C as lyophilized proteins.• 3 months, -20°C to -80°C under sterile conditions after reconstitution. <p>Shipping: The product is shipped at ambient temperature. Upon receipt, store it immediately at the recommended temperature.</p> | | |
| Reconstitution | Briefly centrifuge the tube before opening. Reconstitute at 0.1-0.5 mg/mL in sterile water. | | |
| Background | <p>Lactoferrin (LTF), known as an iron-binding glycoprotein, is the most abundant element in milk. Prior research has illustrated that LTF bears multi-pharmacological properties, including protection against infection, regulation inflammatory response, antioxidant and antifibrotic process. Moreover, clinical trials have identified the safety of oral administration of bovine LTF and demonstrated the efficacy of LTF on anti-infection, treatment of inflammation, cancer, metabolic disorders.</p> | | |
| References | <ol style="list-style-type: none">1. Mayeur S. et al. (2016) Antioxid Redox Signal. 24:813–36.2. Ono T. et al. (2015) Br J Nutr. 114:159.3. Yan D. et al. (2013) J Biol Chem. 288:31655–69.4. Ochoa TJ. et al. (2012) Biochem Cell Biol. 90:457–67.5. Ye T. et al. (2023) Theranostics. 13(10):3419-3433. | | |
| Synonyms | Lactoferrin, LTF, EC:3.4.21.-, GIG 12, GIG12 | | |

Selected Validation Data



Purity of Recombinant Human Lactoferrin was determined by SDS-PAGE. The protein was resolved in an SDS-PAGE in reducing (R) and non-reducing (NR) conditions and stained using Coomassie blue.

For technical support and original validation data for this product please contact

T: 027-87531629

E: Proteintech-CN@ptglab.com

W: ptgcn.com

This product is exclusively available under Proteintech Group brand and is not available to purchase from any other manufacturer.