

Recombinant Mouse Crp protein (His Tag)

Catalog Number: Eg0756

Basic Information	Species:	Purity:	Tag:
	Mouse	>90 %, SDS-PAGE	His Tag

Technical Specifications

Purity:
>90 %, SDS-PAGE

Endotoxin Level:
<1.0 EU/ µg protein, LAL method

Source:
HEK293-derived Mouse Crp protein His20-Ser225 (Accession# P14847) with a mouse IgG Fc tag at the C-terminus.

GeneID:
12944

Accession:
P14847

Predicted Molecular Mass:
27.5 kDa

SDS-PAGE:

Formulation:
Lyophilized from sterile PBS, pH 7.4. Normally 5% trehalose and 5% mannitol are added as protectants before lyophilization.

Biological Activity

Not tested

Storage and Shipping

Storage:
It is recommended that the protein be aliquoted for optimal storage. Avoid repeated freeze-thaw cycles.

- Until expiry date, -20°C to -80°C as lyophilized proteins.
- 3 months, -20°C to -80°C under sterile conditions after reconstitution.

Shipping:
The product is shipped at ambient temperature. Upon receipt, store it immediately at the recommended temperature.

Reconstitution

Briefly centrifuge the tube before opening. Reconstitute at 0.1-0.5 mg/mL in sterile water.

Background

C-reactive protein (CRP) is an acute-phase serum protein synthesized by the liver in response to interleukin-6 (IL-6) during inflammation. The name of CRP derives from its ability to react with the C polysaccharide of *Streptococcus pneumoniae*. CRP is an annular, pentameric protein that belongs to the pentraxin family of proteins. CRP displays several functions associated with host defense: it promotes agglutination, bacterial capsular swelling, phagocytosis and complement fixation through its calcium-dependent binding to phosphorylcholine. It is used mainly as a marker of inflammation.

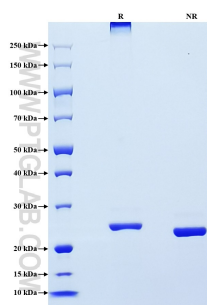
References

1. Valkanova, Vyara et al. Journal of affective disorders vol. 150,3 (2013): 736-44.
2. Sproston, Nicola R, and Jason J Ashworth. Frontiers in immunology vol. 9 (2018): 754.
3. Pathak, Asmita, and Alok Agrawal. Frontiers in immunology vol. 10 (2019): 943.

Synonyms

C reactive protein, C-reactive protein, C-Reactive Protein/CRP

Selected Validation Data



Purity of Recombinant Mouse Crp was determined by SDS-PAGE. The protein was resolved in an SDS-PAGE in reducing (R) and non-reducing (NR) conditions and stained using Coomassie blue.

For technical support and original validation data for this product please contact

T: 027-87531629

E: Proteintech-CN@ptglab.com

W: ptgcn.com

This product is exclusively available under Proteintech Group brand and is not available to purchase from any other manufacturer.