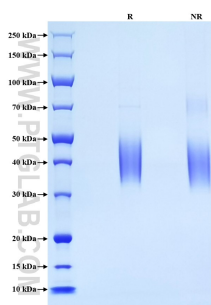


# Recombinant Human PD-L2/CD273 protein (His Tag)

Catalog Number: Eg0507

Basic Information	Species: Human	Purity: >90 %, SDS-PAGE	Tag: His Tag
Technical Specifications	<p><b>Purity:</b> &gt;90 %, SDS-PAGE</p> <p><b>Endotoxin Level:</b> &lt;0.1 EU/ µg protein, LAL method</p> <p><b>Source:</b> HEK293-derived Human PD-L2 protein Leu20-Pro219 (Accession# Q9BQ51-1) with a His tag at the C-terminus.</p> <p><b>GeneID:</b> 80380</p> <p><b>Accession:</b> Q9BQ51-1</p> <p><b>Predicted Molecular Mass:</b> 26.4 kDa</p> <p><b>SDS-PAGE:</b> 34-50 kDa, reducing (R) conditions</p> <p><b>Formulation:</b> Lyophilized from 0.22 µm filtered solution in PBS, pH 7.4. Normally 5% trehalose and 5% mannitol are added as protectants before lyophilization.</p>		
Biological Activity	Not tested		
Storage and Shipping	<p><b>Storage:</b> It is recommended that the protein be aliquoted for optimal storage. Avoid repeated freeze-thaw cycles.</p> <ul style="list-style-type: none"> <li>• Until expiry date, -20°C to -80°C as lyophilized proteins.</li> <li>• 3 months, -20°C to -80°C under sterile conditions after reconstitution.</li> </ul> <p><b>Shipping:</b> The product is shipped at ambient temperature. Upon receipt, store it immediately at the recommended temperature.</p>		
Reconstitution	Briefly centrifuge the tube before opening. Reconstitute at 0.1-0.5 mg/mL in sterile water.		
Background	<p>Programmed cell death ligand 2 (PD-L2, also known as CD273, or B7-DC), is one of the B7 family molecules which are type I transmembrane proteins belonging to the immunoglobulin superfamily. PD-L2 was identified both by its homology to PD-L1 and by analysis of genes differentially expressed in libraries generated from dendritic cells (DC) and activated macrophages. It consists of an extracellular region containing an IgV-like domain and an IgC-like domain, a transmembrane region, and a short cytoplasmic domain. PD-L2 is a second ligand for PD-1, a costimulatory molecule that plays an inhibitory role in regulating T-cell activation.</p>		
References	<p>1.SY Tseng, et al. (2001) J Exp Med. 193(7):839-46.  2.Y Latchman, et al. (2001) Nat Immunol. 2(3):261-8.  3.Spencer C Liang, et al. (2003) Eur J Immunol. 33(10):2706-16.</p>		
Synonyms	PD-L2/B7-DC, PDCD1LG2, PD-L2, B7 DC, B7DC		

## Selected Validation Data



Purity of Recombinant Human PD-L2 was determined by SDS-PAGE. The protein was resolved in an SDS-PAGE in reducing (R) and non-reducing (NR) conditions and stained using Coomassie blue.

For technical support and original validation data for this product please contact

T: 027-87531629

E: [Proteintech-CN@ptglab.com](mailto:Proteintech-CN@ptglab.com)

W: [ptgcn.com](http://ptgcn.com)

This product is exclusively available under Proteintech Group brand and is not available to purchase from any other manufacturer.