

# Recombinant Mouse IL-22 protein (His Tag)

Catalog Number: Eg0405

## Basic Information

**Species:**  
Mouse**EC50:**  
2-8 ng/mL**Purity:**  
>95 %, SDS-PAGE**Tag:**  
His Tag

## Technical Specifications

**Purity:**  
>95 %, SDS-PAGE**Endotoxin Level:**  
<0.1 EU/  $\mu$ g protein, LAL method**Source:**  
HEK293-derived Mouse IL-22 protein Leu34-Val179 (Accession# Q9JJY9) with a His tag at the C-terminus.**GeneID:**  
50929**Accession:**  
Q9JJY9**Predicted Molecular Mass:**  
20.4 kDa**SDS-PAGE:**  
26-38 kDa, reducing (R) conditions**Formulation:**  
Lyophilized from 0.22  $\mu$ m filtered solution in PBS, pH 7.4. Normally 5% trehalose and 5% mannitol are added as protectants before lyophilization.

## Biological Activity

Measured by its ability to induce IL-10 secretion in COLO 205 human colorectal adenocarcinoma cells. The ED50 for this effect is 2-8 ng/mL.

## Storage and Shipping

**Storage:**

It is recommended that the protein be aliquoted for optimal storage. Avoid repeated freeze-thaw cycles.

- Until expiry date, -20°C to -80°C as lyophilized proteins.
- 3 months, -20°C to -80°C under sterile conditions after reconstitution.

**Shipping:**

The product is shipped at ambient temperature. Upon receipt, store it immediately at the recommended temperature.

## Reconstitution

Briefly centrifuge the tube before opening. Reconstitute at 0.1-0.5 mg/mL in sterile water.

## Background

Interleukin-22 (IL-22) is a recently described IL-10 family cytokine that is produced by T helper (Th) 17 cells,  $\gamma$   $\delta$  T cells, NKT cells, and newly described innate lymphoid cells (ILCs). IL-22 has the potential to interact with IL-10 because it binds to the IL-10R2c chain with IL-22R1 in its receptor complex. Binding can be blocked by the soluble receptor, IL-22 binding protein (IL-22BP). IL-22 primarily targets nonhematopoietic epithelial and stromal cells, where it can promote proliferation and play a role in tissue regeneration. IL-22 can contribute to immune disease through the stimulation of inflammatory responses, S100s and defensins. IL-22 also promotes hepatocyte survival in the liver and epithelial cells in the lung and gut similar to IL-10.

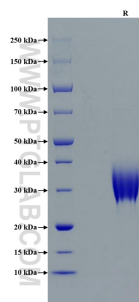
## References

1. Pestka S. et al. (2004) Annu Rev Immunol. 22: 929-79.
2. Wolk K. et al. (2002) J Immunol. 168(11): 5397-5402.
3. Zheng Y et al. (2007) Nature. 445: 648-651.
4. Zheng Y et al. (2008) Nat Med. 14: 282-289.
5. Xie MH, et al. (2000) J Biol Chem. 275: 31335-9.
6. Jones BC, et al. (2008) Structure. 16:1333-44.

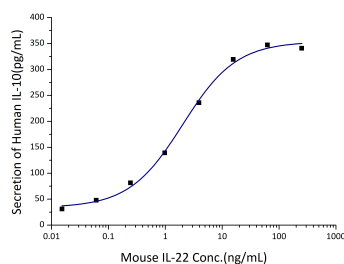
## Synonyms

IL22, IL 22, IL TIF, IL-22, Iltif

## Selected Validation Data



Purity of Recombinant Mouse IL-22 was determined by SDS-PAGE. The protein was resolved in an SDS-PAGE in reducing (R) conditions and stained using Coomassie blue.



Measured by its ability to induce IL-10 secretion in COLO 205 human colorectal adenocarcinoma cells. The ED50 for this effect is 2-8 ng/mL.

For technical support and original validation data for this product please contact

T: 027-87531629

E: [Proteintech-CN@ptglab.com](mailto:Proteintech-CN@ptglab.com)

W: [ptgcn.com](http://ptgcn.com)

This product is exclusively available under Proteintech Group brand and is not available to purchase from any other manufacturer.