

Recombinant Human SCF protein (Myc Tag, His Tag)

Catalog Number: Eg0112

Basic Information

Species:
Human

Purity:
>90 %, SDS-PAGE

Tag:
Myc Tag, His Tag

Technical Specifications

Purity:

>90 %, SDS-PAGE

Endotoxin Level:

<1.0 EU/ µg protein, LAL method

Source:

HEK293-derived Human SCF protein Glu26-Ala189 (Accession# P21583) with a Myc tag and a His tag at the C-terminus.

GeneID:

4254

Accession:

P21583

Predicted Molecular Mass:

24.1 kDa

SDS-PAGE:

Formulation:

Lyophilized from sterile PBS, pH 7.4. Normally 5% trehalose and 5% mannitol are added as protectants before lyophilization.

Biological Activity

Not tested

Storage and Shipping

Storage:

It is recommended that the protein be aliquoted for optimal storage. Avoid repeated freeze-thaw cycles.

- Until expiry date, -20°C to -80°C as lyophilized proteins.
- 3 months, -20°C to -80°C under sterile conditions after reconstitution.

Shipping:

The product is shipped at ambient temperature. Upon receipt, store it immediately at the recommended temperature.

Reconstitution

Briefly centrifuge the tube before opening. Reconstitute at 0.1-0.5 mg/mL in sterile water.

Background

Stem cell factor (SCF) is also named as mast cell growth factor (MGF), Kit ligand (Kitl), c-Kit ligand, steel factor and Kitlg. SCF is a pleiotropic cytokine (also as a dimeric molecule) that mediates regulatory effects on inflammation, tissue remodeling, and fibrosis through binding to and activating its receptor tyrosine kinase c-Kit. SCF is the ligand of c-Kit, a member of the RTKs family. Molecular activity of RTKs is a primary stimulus of cell motility, and expression of the SCF/c-Kit axis is associated with cell migration. SCF is a cytokine that synergizes the effects of Epo during erythropoiesis. Stem cell factor plays a well-described role in regulating the survival, proliferation, migration, and differentiation of hematopoietic progenitors, melanocytes, and germ cells. More recent studies have demonstrated SCF expression in dermal and intestinal epithelial cells, and increased SCF expression has been reported in the inflamed mucosa of individuals with IBD and colonitis.

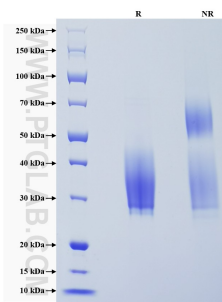
References

1. Williams, D E et al. Cell vol. 63,1 (1990): 167-74.
2. Lukacs, N W et al. Blood vol. 87,6 (1996): 2262-8.
3. Lennartsson, Johan, et al. Physiological reviews vol. 92,4 (2012): 1619-49.
4. Vazquez-Mellado, Maria J et al. Vitamins and hormones vol. 105 (2017): 273-296.
5. Garcia-Hernandez, Vicky et al. Inflammatory bowel diseases vol. 29,7 (2023): 1133-1144.
6. Carter, Eric L et al. The Journal of investigative dermatology vol. 128,7 (2008): 1861-3.
7. Schmitt, Mark et al. Cell reports vol. 24,9 (2018): 2312-2328.e7.

Synonyms

KITLG, c Kit ligand, c-Kit ligand, KIT ligand, Kitl

Selected Validation Data



Purity of Recombinant Human SCF was determined by SDS-PAGE. The protein was resolved in an SDS-PAGE in reducing (R) and non-reducing (NR) conditions and stained using Coomassie blue.

For technical support and original validation data for this product please contact

T: 027-87531629

E: Proteintech-CN@ptglab.com

W: ptgcn.com

This product is exclusively available under Proteintech Group brand and is not available to purchase from any other manufacturer.