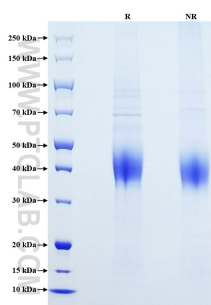


Recombinant Human CLEC12A protein (His Tag)

Catalog Number: Eg0024

Basic Information	Species: Human	Purity: >90 %, SDS-PAGE	Tag: His Tag
Technical Specifications	<p>Purity: >90 %, SDS-PAGE</p> <p>Endotoxin Level: <0.1 EU/ µg protein, LAL method</p> <p>Source: HEK293-derived Human CLEC12A protein His65-Ala265 (Accession# XP_054227196.1) with a His tag at the N-terminus.</p> <p>GeneID: 160364</p> <p>Accession: XP_054227196.1</p> <p>Predicted Molecular Mass: 24.5 kDa</p> <p>SDS-PAGE: 35-50 kDa, reducing (R) conditions</p> <p>Formulation: Lyophilized from 0.22 µm filtered solution in PBS, pH 7.4. Normally 5% trehalose and 5% mannitol are added as protectants before lyophilization.</p>		
Biological Activity	Not tested		
Storage and Shipping	<p>Storage: It is recommended that the protein be aliquoted for optimal storage. Avoid repeated freeze-thaw cycles.</p> <ul style="list-style-type: none">• Until expiry date, -20°C to -80°C as lyophilized proteins.• 3 months, -20°C to -80°C under sterile conditions after reconstitution. <p>Shipping: The product is shipped at ambient temperature. Upon receipt, store it immediately at the recommended temperature.</p>		
Reconstitution	Briefly centrifuge the tube before opening. Reconstitute at 0.1-0.5 mg/mL in sterile water.		
Background	<p>CLEC12A, also known as CD371, M1CL, DCAL-2 or CLL-1, is a type II transmembrane glycoprotein and a member of the C-type lectin superfamily. This protein, which contains a single C-type lectin-like domain and a cytoplasmic immunoreceptor tyrosine-based inhibitory motif (ITIM), is related to LOX-1 and Dectin-1 and is variably spliced and highly N-glycosylated. Its ITIM sequence recruits the tyrosine phosphatases SHP-1 and SHP-2 to negatively regulate Syk signaling. In humans, CLEC12A is mainly expressed on myeloid cells, being found on monocytes, granulocytes, macrophages and DC subsets, and at lower levels on CD4+ T cells.</p>		
References	<ol style="list-style-type: none">1. Linde M Morsink, et al. (2019) Blood Rev. 34:26-33.2. Andrew SJ Marshall, et al. (2004) J Biol Chem. 279(15):14792-802.3. Belén Álvarez, et al. (2020) Front Immunol. 13:11:863.		
Synonyms	CLEC12A, C type lectin like molecule 1, CD371, CLL 1, CLL1		

Selected Validation Data



Purity of Recombinant Human CLEC12A was determined by SDS-PAGE. The protein was resolved in an SDS-PAGE in reducing (R) and non-reducing (NR) conditions and stained using Coomassie blue.

For technical support and original validation data for this product please contact

T: 027-87531629

E: Proteintech-CN@ptglab.com

W: ptgcn.com

This product is exclusively available under Proteintech Group brand and is not available to purchase from any other manufacturer.