

Purified Recombinant EGFP Protein

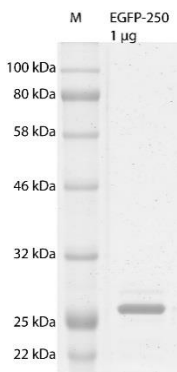
Product code: *EGFP*

Specificity	Purified recombinant enhanced green fluorescent protein fused to 6xHis-tag
Protein length	Full length protein
Source	<i>Escherichia coli</i>
Origin	Engineered from <i>Aequorea victoria</i>
Molecular weight	28 kDa including the polyhistidine-tag
Form	Liquid
Size	250 µL
Protein concentration	1 g/L
Protein amount	250 µg
Purity	>80% by SDS-PAGE Purified using affinity chromatography followed by size-exclusion chromatography
Storage buffer	25 mM TAPS pH 8.5, 500 mM NaCl, 5 mM EDTA, Preservative: 0.09% sodium azide Safety datasheet (SDS) for this product: Sodium Azide SDS
Sequence	MVSKGEELFTGVVPIVLVDGVDVNGHKFSVSGEGEGDATYGKLTCLKFICTTGKLPVPWPTLVTT LTYGVQCFSRYPDHMKQHDFFKSAMPEGYVQERTIFFKDDGNYKTRAEVKFEGDTLVNRIELK GIDFKEDGNILGHKLEYNYNSHNVYIMADKQKNGIKVNFKIRHNIEDGSVQLADHYQQNTPIGDG PVLLPDNHYLSTQSALS KDPNEKRDHMVLLFEVTAAGITLGMDELYKLEHHHHHHH
Applications	<ul style="list-style-type: none"> Immunoprecipitation: use ~ 5 µg EGFP per 25 µL GFP-Trap® bead slurry SDS-PAGE: use ~ 1 µg EGFP per lane Western blot: use ~ 25 ng - 100 ng EGFP per lane ELISA: coat ~ 1ng - 50 ng per well (96-well plate) Other <i>in vitro</i> assays: as a fluorescent standard and for calibration <p>Optimal dilutions/concentrations should be determined by the end user.</p>
Storage instructions	Shipped at +4°C. Store at +4°C short term (up to 1 week). Store at -80°C long term. Avoid freeze-thaw cycles. Stable for one year.

Tested applications

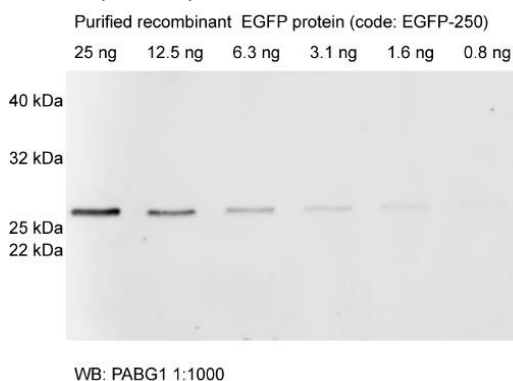
SDS-PAGE

10% acrylamide gel
Detection: InstantBlue



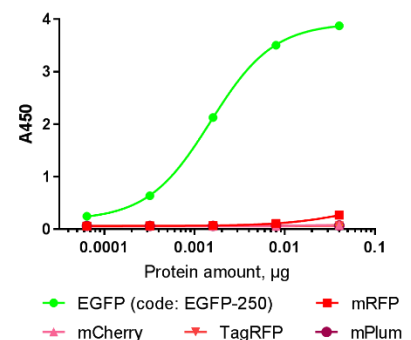
Western Blot

Primary antibody: anti-GFP PABG1 1:1000
Secondary antibody: anti-rabbit_Alexa647 1:2000



ELISA

Primary antibody: anti-GFP PABG1 1:1000
Secondary antibody: anti-rabbit_HRP 1:1000



Only for research applications, not for diagnostic or therapeutic use.