

For Research Use Only

# Cardinal Red™-conjugated PARP1 Monoclonal antibody

Catalog Number: CR-66520

Featured Product



## Basic Information

Catalog Number:

CR-66520

Concentration:

1000 µg/ml

Source:

Mouse

Isotype:

IgG1

Immunogen Catalog Number:

AG19173

GenBank Accession Number:

BC037545

GeneID (NCBI):

142

UNIPROT ID:

P09874

Full Name:

poly (ADP-ribose) polymerase 1

Calculated MW:

1014 aa, 113 kDa

Observed MW:

113-116 kDa, 85-89 kDa

Purification Method:

Protein G purification

CloneNo.:

1D7D4

Recommended Dilutions:

FC (Intra): 0.20 µg per 10<sup>6</sup> cells in a 100 µl suspension

Excitation/Emission maxima wavelengths:

592 nm / 611 nm

## Applications

Tested Applications:

FC (Intra)

Species Specificity:

Human, mouse, rat

Positive Controls:

FC (Intra) : HeLa cells,

## Background Information

PARP1 (poly(ADP-ribose) polymerase 1) is a nuclear enzyme catalyzing the poly(ADP-ribosyl)ation of many key proteins in vivo. The normal function of PARP1 is the routine repair of DNA damage. Activated by DNA strand breaks, the PARP1 is cleaved into an 85 to 89-kDa COOH-terminal fragment and a 24-kDa NH2-terminal peptide by caspases during the apoptotic process. The appearance of PARP fragments is commonly considered as an important biomarker of apoptosis. In addition to caspases, other proteases like calpains, cathepsins, granzymes and matrix metalloproteinases (MMPs) have also been reported to cleave PARP1 and gave rise to fragments ranging from 42-89-kDa. This antibody was generated against the N-terminal region of human PARP1 and it recognizes the full-length as well as the cleavage of the PARP1.

## Storage

Storage:

Store at -20°C. Avoid exposure to light. Stable for one year after shipment.

Storage Buffer:

PBS with 50% glycerol, 0.05% Proclin300, 0.5% BSA, pH7.3

Aliquoting is unnecessary for -20°C storage

For technical support and original validation data for this product please contact:

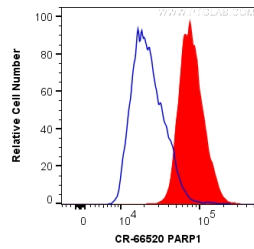
T: 4006900926

E: [Proteintech-CN@ptglab.com](mailto:Proteintech-CN@ptglab.com)

W: [ptgcn.com](http://ptgcn.com)

This product is exclusively available under Proteintech Group brand and is not available to purchase from any other manufacturer.

## Selected Validation Data



1X10<sup>6</sup> HeLa cells were intracellularly stained with 0.2 ug Cardinal Red™ Anti-Human PARP1 (CR-66520, Clone:1D7D4) (red), and the control used was, rabbit IgG Texas Red (blue). Cells were fixed and permeabilized with Transcription Factor Staining Buffer Kit (PF00011).