

# Cardinal Red™ Anti-Human CD55 (JS11)

Catalog Number: **CR-65271**

## Basic Information

**Catalog Number:**

CR-65271

**Size:**

100 tests, 5 ul/test

**Source:**

Mouse

**Isotype:**

IgG1

**GenBank Accession Number:**

BC001288

**GeneID (NCBI):**

1604

**Full Name:**

CD55 molecule, decay accelerating factor for complement (Cromer blood group)

**Calculated MW:**

41 kDa

**Purification Method:**

Affinity purification

**CloneNo.:**

JS11

**Excitation/Emission maxima wavelengths:**

592 nm / 611 nm

## Applications

**Tested Applications:**

FC

**Species Specificity:**

Human

## Background Information

CD55, also known as DAF, is a glycosylphosphatidylinositol (GPI)-anchored surface glycoprotein that is widely distributed on blood, stroma, epithelial, and endothelial cells (PMID: 7517044; 29503741). It can also exist as a soluble form in plasma, urine, saliva, tears, and synovial fluids (PMID: 29503741). CD55 is a complement regulatory protein (PMID: 2469439; 7517044). It inhibits formation of the C3 convertases through binding to C3b and C4b. It also binds the alternate pathway convertase C3bBb, the classical pathway convertase and C4b2a to accelerate their decay (PMID: 17289551). CD55 also serves as a receptor for coxsackieviruses B1, B3, and B5 and several enteroviruses (PMID: 7538177; 7517044).

## Storage

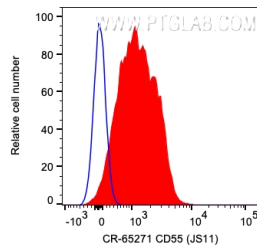
**Storage:**

Store at 2-8°C. Avoid exposure to light. Stable for one year after shipment.

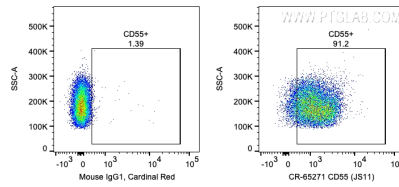
**Storage Buffer:**

PBS with 0.09% sodium azide and 0.5% BSA.

## Selected Validation Data



1X10<sup>6</sup> human PBMCs were surface stained with 5 ul Cardinal Red™ Anti-Human CD55 (CR-65271, Clone: JS11) (red) or Mouse IgG1 Isotype Control. Cells were not fixed. Lymphocytes were gated.



1X10<sup>6</sup> human PBMCs were surface stained with 5 ul Cardinal Red™ Anti-Human CD55 (CR-65271, Clone: JS11) or Mouse IgG1 Isotype Control. Cells were not fixed. Lymphocytes were gated.