

For Research Use Only

Cardinal Red™ Anti-Human CD49b (AK7)



Catalog Number: **CR-65252**

Basic Information

Catalog Number: CR-65252	GenBank Accession Number: NM_002203	Purification Method: N/A
Size: 100tests, 5 µl/test	GeneID (NCBI): 3673	CloneNo.: AK7
Source: Mouse	Full Name: integrin, alpha 2 (CD49B, alpha 2 subunit of VLA-2 receptor)	Excitation/Emission maxima wavelengths: 592 nm / 611 nm
Isotype: IgG1, kappa	Calculated MW: 126 kDa	

Applications

Tested Applications:
FC

Species Specificity:
Human

Background Information

CD49b, also known as alpha2 integrin, is a type I transmembrane glycoprotein which forms an adhesion molecule VLA-2 with beta1 integrin. CD49b is a receptor for many (extracellular) matrix and non-matrix molecules (PMID: 23847623). CD49b is expressed on numerous cell types including platelets, activated T cells, B cells, and monocytes. CD49b activation skews NK cell effector function to a phenotype that exhibits elevated IFN- γ production with a concomitant inhibition of motility and cytolytic function (PMID: 32971468, 32762681). The Anti-Human CD49b antibody, clone AK7, is derived from Human platelets.

Storage

Storage:
Store at 2-8°C. Avoid exposure to light. Stable for one year after shipment.
Storage Buffer:
PBS with 0.09% sodium azide and 0.5% BSA.

For technical support and original validation data for this product please contact:

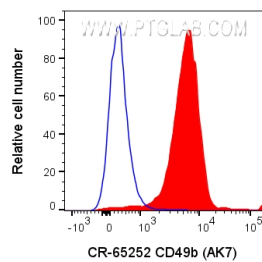
T: 4006900926

E: Proteintech-CN@ptglab.com

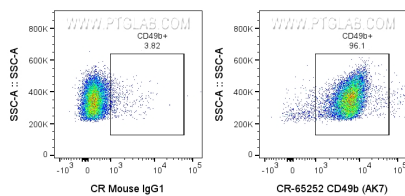
W: ptgcn.com

This product is exclusively available under Proteintech Group brand and is not available to purchase from any other manufacturer.

Selected Validation Data



1x10⁶ human PBMCs were surface stained with 5 ul Cardinal Red™ Anti-Human CD49b (AK7) (CR-65252) or Cardinal Red™ Mouse IgG1 Isotype Control. Cells were treated with FC receptor block prior to staining. Cells were not fixed. Monocytes were gated.



1x10⁶ human PBMCs were surface stained with 5 ul Cardinal Red™ Anti-Human CD49b (AK7) (CR-65252) or Cardinal Red™ Mouse IgG1 Isotype Control. Cells were treated with FC receptor block prior to staining. Cells were not fixed. Monocytes were gated.