

For Research Use Only

Cardinal Red™ Anti-Human CD163 (GHI/61)



Catalog Number: CR-65169

Basic Information

Catalog Number:

CR-65169

Size:

100 tests, 5 ul/test

Source:

Mouse

Isotype:

IgG1, kappa

GenBank Accession Number:

BC051281

GeneID (NCBI):

9332

ENSEMBL Gene ID:

ENSG00000177575

UNIPROT ID:

Q86VB7

Full Name:

CD163 molecule

Calculated MW:

1156 aa, 125 kDa

Purification Method:

Purified by protein-A affinity chromatography

CloneNo.:

GHI/61

Excitation/Emission maximum wavelengths:

592 nm / 611 nm

Applications

Tested Applications:

FC

Species Specificity:

Human

Background Information

CD163, also known as M130, is a membrane glycoprotein which belongs to the scavenger receptor superfamily (PMID: 8370408). It is an acute phase-regulated and signal-inducing macrophage protein expressed exclusively in monocytes and tissue macrophages (PMID: 11196644). CD163 mediates endocytosis of haptoglobin-haemoglobin complexes (PMID: 11196644). The uptake of haptoglobin by macrophages contributes to the recycling of iron and also to the inflammatory response (PMID: 22900885). Soluble CD163 (sCD163), as a result of ectodomain shedding during inflammatory activation of macrophages, circulates in blood and has been suggested as a plasma/serum marker for macrophage activity (PMID: 12570164).

Storage

Storage:

Store at 2-8°C. Avoid exposure to light. Stable for one year after shipment.

Storage Buffer:

PBS with 0.09% sodium azide and 0.5% BSA.

For technical support and original validation data for this product please contact:

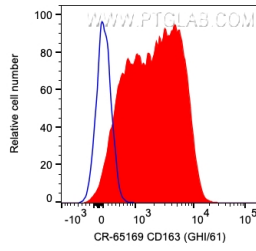
T: 4006900926

E: Proteintech-CN@ptglab.com

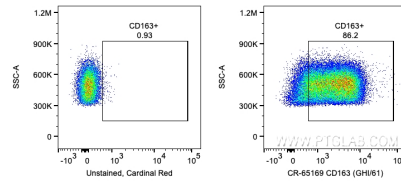
W: ptgcn.com

This product is exclusively available under Proteintech Group brand and is not available to purchase from any other manufacturer.

Selected Validation Data



1X10⁶ human PBMCs were surface stained with 5 ul Cardinal Red™ Anti-Human CD163 (CR-65169, Clone:GHI/61) (red) or unstained. Cells were not fixed. Monocytes and granulocytes were gated.



1X10⁶ human PBMCs were surface stained with 5 ul Cardinal Red™ Anti-Human CD163 (CR-65169, Clone:GHI/61) or unstained. Cells were not fixed. Monocytes and granulocytes were gated.