

For Research Use Only

# Cardinal Red™ Anti-Human CD27 (O323)



Catalog Number: CR-65132

## Basic Information

Catalog Number:

CR-65132

Size:

100 tests, 5 µl/test

Source:

Mouse

Isotype:

IgG1, kappa

GenBank Accession Number:

BC012160

GeneID (NCBI):

939

ENSEMBL Gene ID:

ENSG00000139193

UNIPROT ID:

P26842

Full Name:

CD27 molecule

Calculated MW:

29 kDa

Purification Method:

Affinity purification

CloneNo.:

O323

Excitation/Emission maxima  
wavelengths:

592 nm / 611 nm

## Applications

Tested Applications:

FC

Species Specificity:

Human

## Background Information

CD27 (also known as TNFRSF7) is a type I glycoprotein expressed on some B cells and the majority of T cells, and is a member of the tumor necrosis factor (TNF) receptor family. CD27 is required for generation and long-term maintenance of T cell immunity (PMID: 11062504). It is a receptor for CD70 (CD27L). Ligation of CD27 by CD70 induces strong ubiquitination of TRAF and the activation of both canonical and non-canonical NF-kappaB pathways, as well as the JNK pathway (PMID: 19426224). CD27 may also play a role in apoptosis through association with SIVA1.

## Storage

Storage:

Store at 2-8°C. Avoid exposure to light. Stable for one year after shipment.

Storage Buffer:

PBS with 0.09% sodium azide and 0.5% BSA.

For technical support and original validation data for this product please contact:

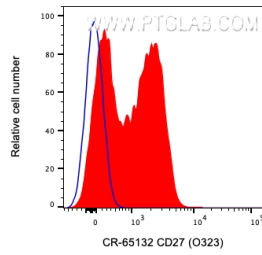
T: 4006900926

E: [Proteintech-CN@ptglab.com](mailto:Proteintech-CN@ptglab.com)

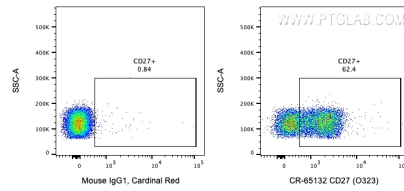
W: [ptgcn.com](http://ptgcn.com)

**This product is exclusively available under Proteintech Group brand and is not available to purchase from any other manufacturer.**

## Selected Validation Data



1X10<sup>6</sup> human PBMCs were surface stained with 5 ul Cardinal Red™ Anti-Human CD27 (CR-65132, Clone:O323) (red) or Mouse IgG1 Isotype Control. Cells were not fixed. Lymphocytes were gated.



1X10<sup>6</sup> human PBMCs were surface stained with 5 ul Cardinal Red™ Anti-Human CD27 (CR-65132, Clone:O323) or Mouse IgG1 Isotype Control. Cells were not fixed. Lymphocytes were gated.