

For Research Use Only

# Cardinal Red™ Mouse IgG2b Isotype Control (MPC-11)

Catalog Number: CR-65128



## Basic Information

Catalog Number:

CR-65128

Size:

100ug, 0.2 mg/mL

Source:

Mouse

Isotype:

IgG2b, kappa

GenBank Accession Number:

GeneID (NCBI):

16016

UNIPROT ID:

P01867

Full Name:

immunoglobulin heavy chain 3  
(serum IgG2b)

Purification Method:

Affinity purification

CloneNo.:

MPC-11

Excitation/Emission maxima  
wavelengths:

592 nm / 611 nm

## Applications

Tested Applications:

FC

Species Specificity:

n/a

## Background Information

The MPC-11 immunoglobulin is useful as an isotype-matched control. The MPC-11 immunoglobulin has an unknown binding specificity and is used as an isotype control for mouse IgG2b antibodies. This antibody has been quality-tested for flow cytometry as negative control.

## Storage

Storage:

Store at 2-8°C. Avoid exposure to light. Stable for one year after shipment.

Storage Buffer:

PBS with 0.09% sodium azide and 0.5% BSA.

For technical support and original validation data for this product please contact:

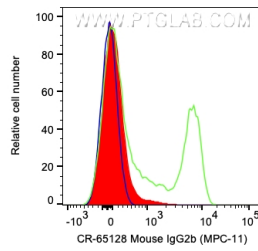
T: 4006900926

E: [Proteintech-CN@ptglab.com](mailto:Proteintech-CN@ptglab.com)

W: [ptgcn.com](http://ptgcn.com)

This product is exclusively available under Proteintech Group brand and is not available to purchase from any other manufacturer.

## Selected Validation Data



1X10<sup>6</sup> human PBMCs were surface stained with 0.2 ug Cardinal Red™ Anti-Mouse IgG2b Isotype Control (CR-65128, Clone:MPC-11) (red), 5 ul CR Anti-Human CD4 (green), or unstained (blue). Cells were not fixed. Lymphocytes were gated.