

For Research Use Only

Cardinal Red™-conjugated P62/SQSTM1 Polyclonal antibody

Catalog Number: CR-18420

Featured Product



Basic Information

Catalog Number:

CR-18420

Concentration:

1000 µg/ml

Source:

Rabbit

Isotype:

IgG

Immunogen Catalog Number:

AG13131

GenBank Accession Number:

BC017222

GeneID (NCBI):

8878

UNIPROT ID:

Q13501

Full Name:

sequestosome 1

Calculated MW:

48 kDa

Observed MW:

62 kDa

Purification Method:

Antigen affinity purification

Excitation/Emission maxima
wavelengths:

592 nm / 611 nm

Applications

Tested Applications:

FC (Intra)

Species Specificity:

human

Background Information

Sequestosome 1 (SQSTM1/p62) is a multifunctional adaptor protein implicated in selective autophagy, cell signaling pathways, and tumorigenesis. p62 has been implicated in shuttling ubiquitinated and aggregated proteins for autophagic degradation. p62 is degraded during the autophagic process, which makes its intracellular level a marker for autophagy progression. p62 is at the cross-roads of several signaling pathways including Ras/ Raf/ MAPK and NF-κB and plays important role in cancer. p62 is a component of inclusion bodies/ protein aggregates found in human diseases, including Huntington's disease, Alzheimer's disease, Parkinson's disease, and nephropathic cystinosis (PMID: 22074114, 22860231, 22714671). The molecular weight of p62 is predicted to be 48/ 38 kDa (depending on the isoform), while western blot analyses using this antibody detects the bands around 45-48 kDa and 60-62 kDa, respectively.

Storage

Storage:

Store at -20°C. Avoid exposure to light. Stable for one year after shipment.

Storage Buffer:

PBS with 50% Glycerol, 0.05% Proclin300, 0.5% BSA, pH 7.3.

Aliquoting is unnecessary for -20°C storage

For technical support and original validation data for this product please contact:

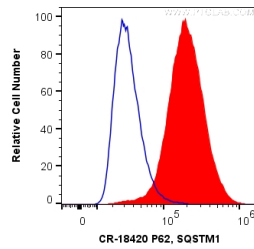
T: 4006900926

E: Proteintech-CN@ptglab.com

W: ptgcn.com

This product is exclusively available under Proteintech Group brand and is not available to purchase from any other manufacturer.

Selected Validation Data



1×10^6 HeLa cells were intracellularly stained with 0.2 μ g Cardinal Red™ Anti-Human P62,SQSTM1 (CR-18420) (red), or 0.2 μ g Control Antibody. Cells were fixed with 4% PFA and permeabilized with Flow Cytometry Perm Buffer (PF00011-C).