

For Research Use Only

# FcZero-rAb® PerCP Anti-Mouse CD3e (145-2C11) Rabbit Recombinant Antibody

Catalog Number:CP-FcA65651



## Basic Information

Catalog Number:

CP-FcA65651

Concentration:

100ug, 200 ug/ml

Source:

Rabbit

Isotype:

IgG

GenBank Accession Number:

BC098236

GeneID (NCBI):

12501

UNIPROT ID:

P22646

Full Name:

CD3 antigen, epsilon polypeptide

Purification Method:

Protein A purification

CloneNo.:

145-2C11

Recommended Dilutions:

FC: 0.25 ug per 10<sup>6</sup> cells in a 100 µl suspension

Excitation/Emission maxima wavelengths:

482 nm / 677 nm

## Applications

Tested Applications:

FC

Species Specificity:

mouse

Positive Controls:

FC : mouse splenocytes,

## Background Information

CD3 is a multimeric protein associated with the T-cell receptor (TCR) to form a complex involved in antigen recognition and signal transduction (PMID: 15885124). CD3 is composed of CD3  $\gamma$ ,  $\delta$ ,  $\epsilon$ , and  $\zeta$  chains (PMID: 1826255). It is expressed by thymocytes in a developmentally regulated manner, T cells, and some NK cells (PMID: 3289580). The TCR recognizes antigens bound to major histocompatibility complex (MHC) molecules. TCR-mediated peptide-MHC recognition is transmitted to the CD3 complex, leading to the intracellular signal transduction (PMID: 11985657).

## Storage

Storage:

Store at 2-8°C. Avoid exposure to light. Stable for one year after shipment.

Storage Buffer:

PBS with 0.09% sodium azide and 0.5% BSA, pH7.3

For technical support and original validation data for this product please contact:

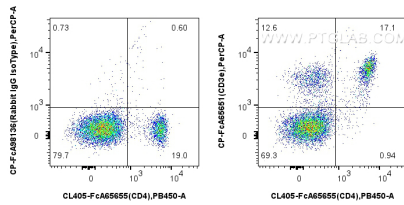
T: 4006900926

E: Proteintech-CN@ptglab.com

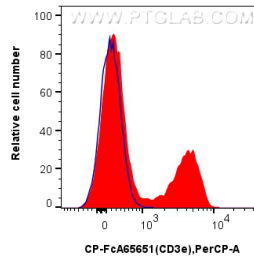
W: ptgcn.com

This product is exclusively available under Proteintech Group brand and is not available to purchase from any other manufacturer.

## Selected Validation Data



1x10<sup>6</sup> mouse splenocytes were surface stained with Coralite® Plus 405 Anti-Mouse CD4 (RM4-4) and 0.25 ug PerCP Anti-Mouse CD3e (145-2C11) Rabbit RecAb (CP-FcA65651, Clone:145-2C11), or 0.25 ug Rabbit IgG Isotype Control RecAb (CP-FcA98136, Clone: 240953C9). Cells were not fixed.



1x10<sup>6</sup> mouse splenocytes were surface stained with 0.25 ug PerCP Anti-Mouse CD3e (145-2C11) Rabbit RecAb (CP-FcA65651, Clone:145-2C11) (red), or 0.25 ug Rabbit IgG Isotype Control RecAb (CP-FcA98136, Clone: 240953C9) (blue). Cells were not fixed.