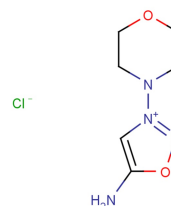


Catalog Number: CM11744

产品信息

Catalog Number:
CM11744CAS号:
16142-27-1分子式:
 $C_6H_{11}ClN_4O_2$ 主要靶点:
Others主要通路:
其他分子量:
206.63溶解度:
H₂O:45.0 mg/mL (217.8 mM), Sonification is recommended., DMSO:22.5 mg/mL (108.9 mM), ultrasonic and warming and heat to 60°C

体外活性

SIN-1 decreases myocardial necrosis and reperfusion-induced endothelial dysfunction in models of myocardial ischemia-reperfusion [1][2].

体内活性

SIN-1 (chloride) is the active metabolite of molsidomine. SIN-1 (chloride) exhibits a potent vasorelaxant effect and inhibition of platelet aggregation.[1] SIN-1 (chloride) decreases myocardial necrosis and reperfusion-induced endothelial dysfunction in models of myocardial ischemia-reperfusion.[2]

描述

Linsidomine hydrochloride is considered as a metabolite of molsidomine, with vasodilation, inhibition of platelet aggregation, and antiangina activity. In myocardial ischemia-reperfusion models, Linsidomine hydrochloride to reduce myocardial necrosis and reperfusion induced endothelial dysfunction is associated with the cavernosal mechanism of action involved in nitric oxide release.

储存

Powder: -20°C for 3 years | In solvent: -80°C for 2 years