

Catalog Number: CM11557

## 产品信息

Catalog Number:  
CM11557

CAS号:  
1086-80-2

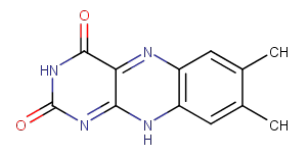
分子式:  
 $C_{12}H_{10}N_4O_2$

主要靶点:  
Others

主要通路:  
其他

分子量:  
242.23

溶解度:  
DMSO:Soluble,H2O:Soluble



## 描述

Lumichrome is a natural metabolite of riboflavin. Lumichrome produced by Rhizobium and other bacterial species induces major developmental changes in plants at nanomolar concentrations. Lumichrome can stimulate larval metamorphosis in ascidians and activate the LasR quorum sensing receptor of bacteria. Lumichrome competitively inhibits the uptake of riboflavin by riboflavin transporters from prokaryotes and eukaryotes.

## 储存

Powder: -20°C for 3 years | In solvent: -80°C for 2 years