

For Research Use Only

Coralyne chloride

Catalog Number: CM11450

产品信息

Catalog Number:
CM11450

CAS号:
38989-38-7

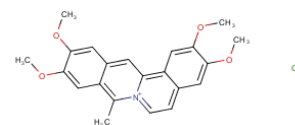
分子式:
 $C_{22}H_{22}ClNO_4$

主要靶点:
Topoisomerase

主要通路:
DNA 损伤和修复

分子量:
399.87

溶解度:
DMSO:1.5 mg/mL (3.75 mM); H₂O:3 mg/mL (7.5 mM)



体外活性

There is synergism between Coralyne and Paclitaxel on proliferation and migration of breast cancer cell lines. This study also showed that combinational drug treatment decreased the expression of ki-67 and there was an increase in pro apoptotic factor Bax with decreased in expression of anti-apoptotic factor Bcl-2 in breast cancer cell lines with negligible effect on normal breast cell line[2].

储存

Powder: -20°C for 3 years | In solvent: -80°C for 1 year | Shipping with blue ice.