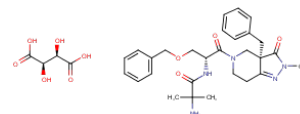


Catalog Number: CM11388

产品信息

Catalog Number:
CM11388CAS号:
193273-69-7分子式:
C₃₂H₄₁N₅O₁₀主要靶点:
GHSR主要通路:
G 蛋白偶联受体分子量:
655.7溶解度:
DMSO:100 mg/mL (152.51 mM)

靶点活性

GHS-R1a (human):7 nM (Ki)

体外活性

Capromorelin在大鼠脑垂体细胞培养中促进GH释放 (EC₅₀: 3 nM) [1]。

体内活性

Capromorelin在啮齿动物模型中展现出了增强的肠道吸收能力，并且在药代动力学属性上表现出众，包括在两种动物模型中的高生物利用度 (F(rat)=65%, F(dog)=44%)。Capromorelin能够在麻醉状态的大鼠模型中刺激GH释放 (ED₅₀: 0.05 mg/kg iv)。接受capromorelin (30 mg/mL) 治疗的狗，其食物消耗量显著高于接受安慰剂治疗的狗。所有接受capromorelin治疗的狗体重增加了0.52 kg，这一增加量高于安慰剂组。

动物实验

The study tested capromorelin flavored oral solution with 30 mg/mL of capromorelin compared to a matched placebo flavored oral solution treatment (which contains all the ingredients of the formulation without capromorelin) administered for 4 days. Dogs are randomized into two groups, with Group 1 receiving placebo (0.1 mL/kg) and Group 2 receiving 3.0 mg/kg. Both groups are treated once a day at approximately 9 AM each day. The first day of dosing is considered Day 0. The placebo and test drug are administered by a syringe placed in the corner of the mouth. The Day 0 weight is used for dose calculations [2].

储存

Powder: -20°C for 3 years | In solvent: -80°C for 1 year | Shipping with blue ice.