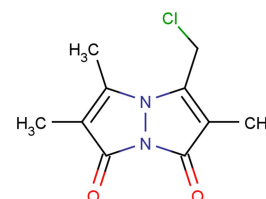


Catalog Number: CM09609

## 产品信息

Catalog Number:  
CM09609CAS号:  
76421-73-3分子式:  
 $C_{10}H_{11}ClN_2O_2$ 

主要靶点:

分子量:  
226.66溶解度:  
DMSO:45.0 mg/mL (198.5 mM), Sonification is recommended.

## 体外活性

A common technique to measure Glutathione (GSH) in cultured cells is to add Monochlorobimane to the culture medium where it readily enters cells to form a fluorescent GSH-monochlorobimane adduct that can be measured fluorometrically. The Monochlorobimane approach gives comparable results to the HPLC technique. Monochlorobimane concentration can be lowered to 25 mM and still accurately measure homogenate GSH content.[1]

## 描述

Monochlorobimane is a fluorescent dye with a  $\lambda_{ex}$  value of 380 nm and a  $\lambda_{em}$  value of 470 nm. Monochlorobimane can be used to measure glutathione (GSH) in cells.

## 储存

Powder: -20°C for 3 years | In solvent: -80°C for 2 years