

Catalog Number: CM06741

产品信息

Catalog Number:
CM06741

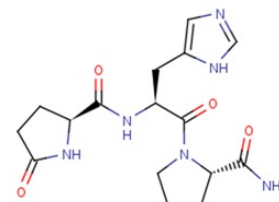
分子量:
362.38

CAS号:
24305-27-9

分子式:
 $C_{16}H_{22}N_6O_4$

主要靶点:
Thyroid hormone
receptor (THR) | Endogenous
Metabolite

主要通路:
内分泌与激素 | 代谢



靶点活性

Thyroid hormone receptor:

体内活性

Protirelin (TRH) is an evolutionarily ancient neuropeptide, having its origin before the divergence of protostomes and deuterostomes. Protirelin may ancestrally have been involved in the control of postembryonic growth and reproduction. The effect of the thyrotropin-releasing hormone (Protirelin, TRH), one of the hypothalamic releasing hormones, on body temperature is investigated in the rat. Protirelin, in doses of 1, 5, 10 and 20 mg/kg, is injected intraperitoneally to male Wistar rats weighing 200-250 g. Protirelin causes a temporary rise in body temperature dose-dependently. The thyroidectomized rats injected 20 mg/kg of Protirelin which induces a significant hyperthermia in the sham-operated animals, fail to show a rise in body temperature. The present results suggest that a release of thyroid hormone might participate in the hyperthermic action of Protirelin.

动物实验

Protirelin (TRH tartRatse) is dissolved in physiological saline (Rats). Rats Ninety male Wistar rats weighing 200-250 g are subjected to the study. In the first experiment, 50 rats are divided into five groups randomly. Four doses of Protirelin dissolved in physiological saline, i. e., 1 mg/kg, 5 mg/kg, 10 mg/kg and 20 mg/kg, are administered intraperitoneally to the four groups and saline to the remaining control group. Rectal temperature is measured at the place 5 cm inner from the anus with the electronic thermister before and after treatment with Protirelin or saline. In the second experiment, 40 rats are thyroidectomized or sham-operated under the anesthesia by thiopental sodium. Ten days after the operation, 20 mg/kg of Protirelin or saline is administered to the thyroidectomized and sham-operated animals by i. p. and rectal temperature is measured using the same method as used in the first experiment. These two experiments are undertaken from 1 p. m. to 4 p. m. and the room temperature is kept at $24 \pm 1^\circ\text{C}$ through the experiments including the breeding period. For a statistical analysis, Student's t test (two-tailed) is adopted.

描述

Protirelin is a tripeptide that stimulates the release of thyrotropin and prolactin.

储存

Powder: -20°C for 3 years | In solvent: -80°C for 2 years