

For Research Use Only

Mitoxantrone dihydrochloride



www.ptgcn.com

Catalog Number: CM06710

产品信息

Catalog Number:
CM06710

CAS号:
70476-82-3

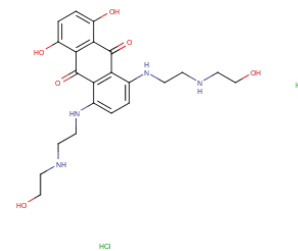
分子式:
C₂₂H₃₀Cl₂N₄O₆

主要靶点:
Topoisomerase|PKC

主要通路:
DNA 损伤和修复|细胞骨架|表观遗传

分子量:
517.4

溶解度:
H₂O:2.6 mg/mL (5.03 mM);DMSO:38.8 mg/mL (74.99 mM)



靶点活性

PKC:8.5 μM

体外活性

Methotrexate在小鼠气囊炎模型中,Methotrexate的IC₅₀为每周0.08 mg/kg.

体内活性

Methotrexate能够抑制嘌呤和嘧啶的从头合成,多胺的形成以及DNA、RNA、磷脂和蛋白质的转甲基作用。Methotrexate抑制胸苷酸合成酶,使细胞内胸苷酸不足,最终导致抗增殖的细胞毒性作用。Methotrexate通过主动转运或易化扩散进入细胞,在细胞内经过多聚谷氨酸化后,会抑制二氢叶酸还原酶和二氢叶酸转化为四氢叶酸。

细胞实验

The human breast carcinoma cell lines MDA-MB-231 and MCF-7 are seeded in standard 96-well plates. One day after seeding, the culture medium is changed and replaced by medium containing different concentration of Mitoxantrone (10-5 to 5 μM) with or without DHA (30 μM) during 7 days. Viability of cells are measured as a whole by the tetrazolium salt assay[3].

储存

Powder: -20°C for 3 years | In solvent: -80°C for 1 year | Shipping with blue ice.

For technical support and original validation data for this product please contact

T: 027-87531629

E: Proteintech-CN@ptglab.com

W: ptgcn.com

This product is exclusively available under Proteintech Group brand and is not available to purchase from any other manufacturer.