

Catalog Number: CM06469

产品信息

Catalog Number:
CM06469

CAS号:
469-59-0

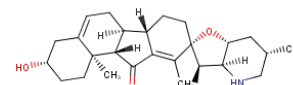
分子式:
C₂₇H₃₉NO₃

主要靶点:
Hedgehog/Smoothed|Smo

主要通路:
干细胞|G蛋白偶联受体|干细胞

分子量:
425.6

溶解度:
DMSO:4.26 mg/mL (10.01 mM); Chloroform:Soluble; H₂O:< 1 mg/mL (insoluble or slightly soluble)



靶点活性

Hedgehog:500-700 nM (IC₅₀)

体外活性

与对照组相比,暴露于25 μg/ml jervine的软骨细胞培养显示细胞数量明显减少,但在细胞形态或alcian blue染色的相对强度上没有差异[2]。

体内活性

胚胎暴露于jervine时,会发展出与Shh突变胚胎中发现的类似的颅面异常。这些胚胎的下颌严重缩小,常常导致门牙缺失。用jervine处理怀孕的小鼠,会在胚胎中诱发类似于Prx1/Prx2/胚胎中发现的下颌缺陷。下颌的远端部分大小减小,两颗门牙缺失[1]。

细胞实验

Cells are grown in Eagle's basal medium supplemented with 10% fetal bovine serum and 0.25 mg/ml gentamicin sulfate. Cells are seeded onto 35-mm tissue culture plates at a density of 1×10⁴ cells/plate. The plated cells are incubated for 24 hours prior to treatment in a humidified incubator at 37 °C in an atmosphere of 5% CO₂ in air. Drugs are then added: jervine to a final concentration of 5, 10, or 25 μg/ml; retinoic acid at 0.03, 0.30, or 3.0 μg/ml. After a final 48 hours of incubation, media are removed, the cultures are rinsed three times with phosphate-buffered saline (PBS) pH 7.4, and the cells are harvested into 0.5 ml of 0.1% (w/v) trypsin which contained 0.1% EDTA (w/v) in PBS. Each sample is mixed with 9.5 ml Isoton II, and cell numbers are determined by using a Coulter Counter. (Only for Reference)

储存

keep away from direct sunlight | Powder: -20°C for 3 years | In solvent: -80°C for 1 year | Shipping with blue ice.