

Catalog Number: CM04011

产品信息

Catalog Number:
CM04011

CAS号:
221054-79-1

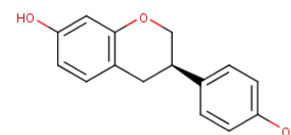
分子式:
C₁₅H₁₄O₃

主要靶点:
Estrogen/progestogen Receptor

主要通路:
内分泌与激素

分子量:
242.2699

溶解度:
DMSO:100 mg/mL (412.76 mM), Sonication/heating is recommended.



靶点活性

ER β :15.4 nM (K_i)|ER α :27.4 nM (K_i)

体外活性

(R)-Equol produced a dose-dependent inhibitory effect on the invasive ability of MDA-MB-231 cells, and this inhibitory effect was obvious at the highest test concentration (50 μ M). Following 48-h exposure to (R)-Equol, invasion is reduced by 62% (p=0.009, versus untreated cells) with 50 μ M (R)-Equol. Matrix metalloproteinase-2 (MMP-2) expression is significantly down-regulated following treatment with 50 μ M (R)-Equol (p=0.035) [2].

体内活性

In Animals, (R)-Equol has a significantly reduced number of palpable tumors over time when compared with Controls (P=0.002). In addition, the number of palpable tumors formed by each rat in the (R)-Equol fed group was significantly lower than that of rats treated with S-(-)-equol (P = 0.008). (R)-Equol-fed animals have 43% fewer tumors than the control group and this difference is highly statistically significant (P=0.004). The number of tumors/tumor-bearing animals is significantly lower in the animals fed (R)-Equol compare with Controls (3.3 \pm 0.4 versus 5.5 \pm 0.5, P=0.004). At necropsy, the mean (\pm SEM) tumor weight per animal for (R)-Equol fed rats (5.3 \pm 1.1 mg) is significantly reduced (P=0.04) when compared with Controls (9.9 \pm 1.4 mg). Feeding the (R)-Equol diet results in significantly increased tumor latency (P=0.003) [3].

描述

(R)-Equol is an ER α and ER β agonist with K_is of 27.4 and 15.4 nM, respectively.

储存

Powder: -20°C for 3 years | In solvent: -80°C for 1 year