

Catalog Number: CM01241

## 产品信息

**Catalog Number:**  
CM01241

**CAS号:**  
484-12-8

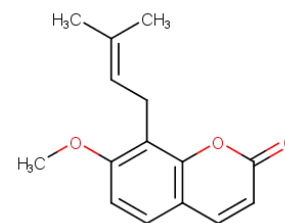
**分子式:**  
C<sub>15</sub>H<sub>16</sub>O<sub>3</sub>

**主要靶点:**  
Parasite|Histamine  
Receptor|Apoptosis|HBV

**主要通路:**  
微生物学|微生物学|凋亡|G 蛋白偶  
联受体|免疫与炎症|神经科学

**分子量:**  
244.29

**溶解度:**  
Ethanol:46 mg/mL (188.3  
mM); H<sub>2</sub>O:< 1 mg/mL (insoluble  
or slightly soluble); DMSO:55  
mg/mL (225.14 mM)



## 体外活性

Osthole在不同的动物中的LD50分别是,大鼠>125 mg/kg(i.v.);兔子>35 mg/kg(i.v.);狗>150 mg/kg(i.v.).

## 体内活性

在洗涤过的兔血小板中, Osthole能够抑制ADP,花生四烯酸,PAF,胶原蛋白,离子载体A23187和凝血酶诱导的血小板聚集和ATP释放。在人成骨细胞中,Osthole通过骨形态发生蛋白-2 / p38和细胞外信号调节激酶1/2通路,介导细胞分化。在细胞培养中,Osthole通过增加HBsAg的糖基化,抑制乙型肝炎病毒的分泌。

## 细胞实验

Osthole is dissolved in 96% ethyl alcohol and then sterilized through a 0.22 μg/mL filter and stored at 4°C as stock solutions for later dilution[1]. Peripheral blood samples are collected from participants between 7.00 and 9.00 a.m. on the first study day and these are concentrated in grouping tubes with K3EDTA. Fresh PBMCs are then prepared. Isolated cells are seeded on 24-well plates at 1×10<sup>6</sup> per well with RPMI-1640 and supplemented with 1% heat inactivated human AB serum, 1% gentamicin and 0.25% PHA. Active reagents are added to each well after 24 h and pure medium formed the control for each substance. Cells are then harvested after a further three days[1].

## 储存

Powder: -20°C for 3 years | In solvent: -80°C for 1 year | Shipping with blue ice.