

For Research Use Only.  
Not For Use In Diagnostics.

# Streptavidin-CoraLux Violet 510 Conjugate

Catalog Number: CLV510-PF00030



## Information

Catalog Number:	Reactivity:
CLV510-PF00030	Physical State:
Host:	Liquid
Applications:	Conjugation:
FC, IF	CoraLux Violet 510

## Recommended Dilutions

1:200-1:1000 for flow cytometry and immunofluorescence

## Storage

Storage:  
2-8°C for one year.  
Storage Buffer:  
PBS with 0.1% sodium azide, pH 7.4.  
Aliquoting is unnecessary for -20°C storage

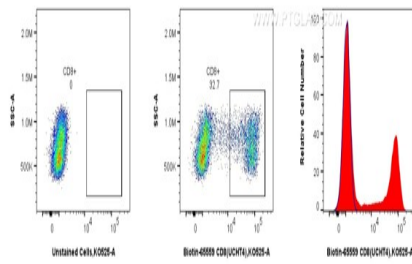
## Purity

For technical support and original validation data for this product please contact:

T: 4006900926 E: Proteintech-CN@ptglab.com W: ptgcn.com

This product is exclusively available under Proteintech Group brand and is not available to purchase from any other manufacturer.

## Selected Validation Data



Flow cytometric analysis of human PBMCs using Biotin anti-human CD8 and CoraLite®510-conjugated Streptavidin. Human PBMCs were stained with Biotin CD8 Recombinant Antibody (Cat.No. Biotin-65559, Clone: UCHT4), washed with PBS, and stained with CoraLux Violet 510-conjugated Streptavidin (Cat.No.CLV510-PF00030) and analyzed by flow cytometry.