

For Research Use Only

CoraLux Violet 510 Anti-Mouse CD25/IL-2RA Rabbit Recombinant Antibody

Catalog Number: CLV510-98288



Basic Information

Catalog Number:

CLV510-98288

Concentration:

100ug, 500 ug/ml

Source:

Rabbit

Isotype:

IgG

Immunogen Catalog Number:

EG3087

GenBank Accession Number:

NM_008367.3

GeneID (NCBI):

16184

UNIPROT ID:

P01590

Full Name:

interleukin 2 receptor, alpha chain

Calculated MW:

31 kDa

Purification Method:

Protein A purification

CloneNo.:

242494H5

Recommended Dilutions:

FC: 0.25 ug per 10⁶ cells in a 100 µl suspension

Excitation/Emission maxima wavelengths:

410 nm / 501 nm

Applications

Tested Applications:

FC

Species Specificity:

mouse

Positive Controls:

FC : anti-CD3/CD28 treated mouse splenocytes,

Background Information

Proliferation of T lymphocytes is triggered by the interaction of IL-2 with its specific receptor following T lymphocyte activation. The receptor for IL-2 has three forms, generated by different combinations of three different proteins, the alpha chain (IL-2R alpha), the beta chain (IL-2R beta), and the gamma chain (IL-2R gamma) (PMID: 8476561). IL-2R alpha (also known as CD25) is a type I transmembrane protein present on activated T cells, activated B cells, some thymocytes, myeloid precursors, and oligodendrocytes. CD25 is also found on natural CD4⁺Foxp3⁺ Treg cells and a subset of human CD4⁺ memory T cells (PMID: 22585674).

Storage

Storage:

Store at 2-8°C. Avoid exposure to light. Stable for one year after shipment.

Storage Buffer:

PBS with 0.09% sodium azide, pH7.3

For technical support and original validation data for this product please contact:

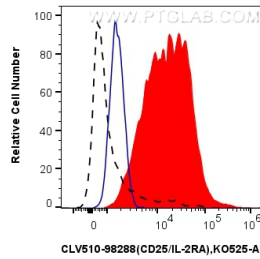
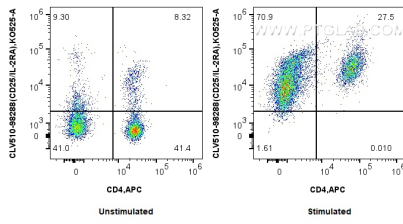
T: 4006900926

E: Proteintech-CN@ptglab.com

W: ptgcn.com

This product is exclusively available under Proteintech Group brand and is not available to purchase from any other manufacturer.

Selected Validation Data



1×10^6 untreated or anti-CD3/CD28 treated mouse splenocytes were stained with APC Anti-Mouse CD4 and 0.25 μ g CoraLux Violet 510 Anti-Mouse CD25/IL-2RA Rabbit RecAb (CLV510-98288, Clone: 242494H5). Cells were not fixed.

1×10^6 anti-CD3/CD28 treated mouse splenocytes were surface stained with 0.25 μ g CoraLux Violet 510 Anti-Mouse CD25/IL-2RA Rabbit RecAb (CLV510-98288, Clone: 242494H5) (red) or CoraLux Violet 510 Rabbit IgG Isotype Control Recombinant Antibody (CLV510-98136, Clone: 240953C9) (blue). 1×10^6 untreated mouse splenocytes were stained with 0.25 μ g CoraLite® Plus 405 Anti-Mouse CD25/IL-2RA Rabbit RecAb (CL405-98288, Clone: 242494H5) (black dashed).