

For Research Use Only



# CoraLux Violet 510 Anti-Mouse NKp46/NCR1 Rabbit Recombinant Antibody

Catalog Number: **CLV510-98198**

## Basic Information

<b>Catalog Number:</b> CLV510-98198	<b>GenBank Accession Number:</b> NM_010746.3	<b>Purification Method:</b> Protein A purification
<b>Concentration:</b> 100ug, 500 ug/ml	<b>GeneID (NCBI):</b> 17086	<b>CloneNo.:</b> 241804A12
<b>Source:</b> Rabbit	<b>UNIPROT ID:</b> Q8C567	<b>Recommended Dilutions:</b> FC: 0.25 ug per 10 <sup>6</sup> cells in a 100 µl suspension
<b>Isotype:</b> IgG	<b>Full Name:</b> natural cytotoxicity triggering receptor 1	<b>Excitation/Emission maxima wavelengths:</b> 410 nm / 501 nm
<b>Immunogen Catalog Number:</b> EG1825	<b>Calculated MW:</b> 37kDa	

## Applications

<b>Tested Applications:</b> FC	<b>Positive Controls:</b> FC : mouse splenocytes,
<b>Species Specificity:</b> mouse	

## Background Information

NKp46, also known as NCR1 or CD335, is an Ig-like superfamily cell surface receptor that is highly conserved in mammals (PMID: 22021440). NKp46 is a type I transmembrane glycoprotein consisting of two extracellular Ig-like domains, a transmembrane domain, and an intracellular tail (PMID: 9730896). It is expressed on NK cells, rare T-cell subsets and a mucosal population of NKp46+ innate lymphoid cells (PMID: 9730896; 22021440). NKp46 is the major triggering receptor involved in the natural cytotoxicity (PMID: 10359120; 10092106; 15356098).

## Storage

**Storage:**  
Store at 2-8°C. Avoid exposure to light. Stable for one year after shipment.  
**Storage Buffer:**  
PBS with 0.09% sodium azide, pH7.3

For technical support and original validation data for this product please contact:

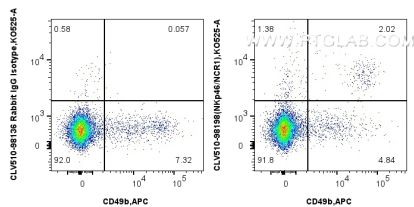
T: 4006900926

E: [Proteintech-CN@ptglab.com](mailto:Proteintech-CN@ptglab.com)

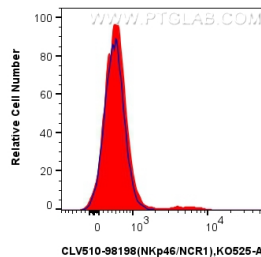
W: [ptgcn.com](http://ptgcn.com)

This product is exclusively available under Proteintech Group brand and is not available to purchase from any other manufacturer.

## Selected Validation Data



1x10<sup>6</sup> mouse splenocytes were surface stained with APC Anti-Mouse CD49b, and 0.25 ug CoraLux Violet 510 Anti-Mouse Nkp46/NCR1 Rabbit RecAb (CLV510-98198, Clone: 241804A12) or CoraLux Violet 510 Rabbit IgG Isotype Control Recombinant Antibody (CLV510-98136, Clone: 240953C9). Cells were not fixed.



1x10<sup>6</sup> mouse splenocytes were surface stained with 0.25 ug CoraLux Violet 510 Anti-Mouse Nkp46/NCR1 Rabbit RecAb (CLV510-98198, Clone: 241804A12) (red) or CoraLux Violet 510 Rabbit IgG Isotype Control Recombinant Antibody (CLV510-98136, Clone: 240953C9) (blue). Cells were not fixed.