

For Research Use Only

# CoraLite® Plus 750 Anti-Mouse SIRP Alpha/CD172a Rabbit Recombinant Antibody

Catalog Number: CL750-98225



## Basic Information

Catalog Number:

CL750-98225

Concentration:

100ug, 500 µg/ml

Source:

Rabbit

Isotype:

IgG

GenBank Accession Number:

NM\_007547.4

GeneID (NCBI):

19261

UNIPROT ID:

P97797-2

Full Name:

signal-regulatory protein alpha

Calculated MW:

56 kDa

Purification Method:

Protein A purification

CloneNo.:

241794D9

Excitation/Emission maxima wavelengths:

755 nm / 780 nm

## Applications

Tested Applications:

FC

Species Specificity:

mouse

## Background Information

SIRP Alpha, also known as CD172a, SHPS-1, and BIT, belongs to the SIRP family. SIRP Alpha is a transmembrane glycoprotein expressed explicitly on myeloid cells and provides a "do not eat me" signal after engaging with integrin-associated protein CD47 on tumor cells (PMID: 36419386). SIRP Alpha shows heterogeneity in molecular weight (~65-120 kDa) in various tissues due to differential glycosylation (PMID: 18051954).

## Storage

Storage:

Store at 2-8°C. Avoid exposure to light. Stable for one year after shipment.

Storage Buffer:

PBS with 0.09% sodium azide.

For technical support and original validation data for this product please contact:

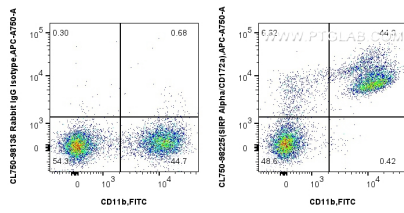
T: 4006900926

E: [Proteintech-CN@ptglab.com](mailto:Proteintech-CN@ptglab.com)

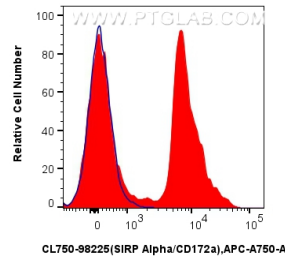
W: [ptgcn.com](http://ptgcn.com)

This product is exclusively available under Proteintech Group brand and is not available to purchase from any other manufacturer.

## Selected Validation Data



1x10<sup>6</sup> mouse bone marrow cells were surface stained with FITC Plus Anti-Mouse CD11b (M1/70), and 0.25 ug CoraLite® Plus 750 Anti-Mouse SIRP Alpha/CD172a Rabbit RecAb (CL750-98225, Clone: 241794D9) or 0.25 ug CoraLite® Plus 750 Rabbit IgG Isotype Control RecAb (CL750-98136, Clone: 240953C9). Cells were not fixed.



1x10<sup>6</sup> mouse bone marrow cells were surface stained with 0.25 ug CoraLite® Plus 750 Anti-Mouse SIRP Alpha/CD172a Rabbit RecAb (CL750-98225, Clone: 241794D9) (red) or 0.25 ug CoraLite® Plus 750 Rabbit IgG Isotype Control RecAb (CL750-98136, Clone: 240953C9) (blue). Cells were not fixed.