

For Research Use Only

# CoraLite® Plus 750 Anti-Mouse PD-1/CD279 Rabbit Recombinant Antibody

Catalog Number: CL750-98080



## Basic Information

Catalog Number:

CL750-98080

Size:

100ug, 500 µg/ml

Source:

Rabbit

Isotype:

IgG

GenBank Accession Number:

NM\_008798.2

GeneID (NCBI):

18566

UNIPROT ID:

Q02242

Full Name:

programmed cell death 1

Calculated MW:

32 kDa

Purification Method:

Protein A purification

CloneNo.:

240389B8

Excitation/Emission maxima wavelengths:

755 nm / 780 nm

## Applications

Tested Applications:

FC

Species Specificity:

mouse

## Background Information

Programmed cell death 1 (PD-1, also known as CD279) is an immunoinhibitory receptor that belongs to the CD28/CTLA-4 subfamily of the Ig superfamily. It is a 288 amino acid (aa) type I transmembrane protein composed of one Ig superfamily domain, a stalk, a transmembrane domain, and an intracellular domain containing an immunoreceptor tyrosine-based inhibitory motif (ITIM) as well as an immunoreceptor tyrosine-based switch motif (ITSM) (PMID: 18173375). PD-1 is expressed during thymic development and is induced in a variety of hematopoietic cells in the periphery by antigen receptor signaling and cytokines (PMID: 20636820). Engagement of PD-1 by its ligands PD-L1 or PD-L2 transduces a signal that inhibits T-cell proliferation, cytokine production, and cytolytic function (PMID: 19426218). It is critical for the regulation of T cell function during immunity and tolerance. Blockade of PD-1 can overcome immune resistance and also has been shown to have antitumor activity (PMID: 22658127; 23169436).

## Storage

Storage:

Store at 2-8°C. Avoid exposure to light. Stable for one year after shipment.

Storage Buffer:

PBS with 0.09% sodium azide.

For technical support and original validation data for this product please contact:

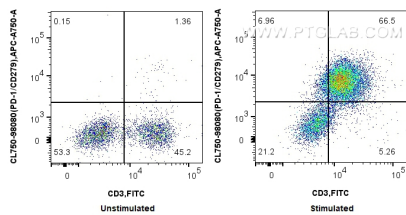
T: 4006900926

E: Proteintech-CN@ptglab.com

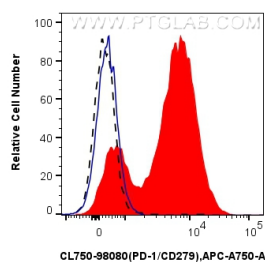
W: ptgcn.com

This product is exclusively available under Proteintech Group brand and is not available to purchase from any other manufacturer.

## Selected Validation Data



1x10<sup>6</sup> untreated or anti-CD3/CD28 treated mouse splenocytes were surface stained with FITC Plus Anti-Mouse CD3 and 0.25 ug CoraLite® Plus 750 Anti-Mouse PD-1/CD279 Rabbit RecAb (CL750-98080, Clone:240389B8). Cells were not fixed.



1x10<sup>6</sup> anti-CD3/CD28 treated mouse splenocytes were surface stained with 0.25 ug CoraLite® Plus 750 Anti-Mouse PD-1/CD279 Rabbit RecAb (CL750-98080, Clone:240389B8) (red) or CoraLite® Plus 750 Rabbit IgG Isotype Control RecAb (CL750-98136, Clone:240953C9) (blue). 1x10<sup>6</sup> untreated mouse splenocytes were surface stained with 0.25 ug CoraLite® Plus 750 Anti-Mouse PD-1/CD279 Rabbit RecAb (CL750-98080, Clone:240389B8) (black, dashed). Cells were not fixed.