

For Research Use Only

# CoraLite® Plus 750 Anti-Human CD4 Rabbit Recombinant Antibody

Catalog Number: CL750-98042



## Basic Information

Catalog Number:

CL750-98042

Concentration:

100 tests, 5 µl/test

Source:

Rabbit

Isotype:

IgG

GenBank Accession Number:

BC025782

GeneID (NCBI):

920

ENSEMBL Gene ID:

ENSG00000010610

UNIPROT ID:

P01730

Full Name:

CD4 molecule

Calculated MW:

55 kDa

Purification Method:

Protein A purification

CloneNo.:

240427E12

Excitation/Emission maxima

wavelengths:

755 nm / 780 nm

## Applications

Tested Applications:

FC

Species Specificity:

human

## Background Information

CD4 is a 55-kDa transmembrane glycoprotein expressed on T helper cells, the majority of thymocytes, monocytes, macrophages, and dendritic cells (PMID: 9304802; 12213222). CD4 is an accessory protein for MHC class-II antigen/T-cell receptor interaction. It plays an important role in T helper cell development and activation (PMID: 9539765; 3112582). CD4 serves as a receptor for the human immunodeficiency virus (HIV) (PMID: 9304802).

## Storage

Storage:

Store at 2-8°C. Avoid exposure to light. Stable for one year after shipment.

Storage Buffer:

PBS with 0.09% sodium azide and 0.5% BSA.

For technical support and original validation data for this product please contact:

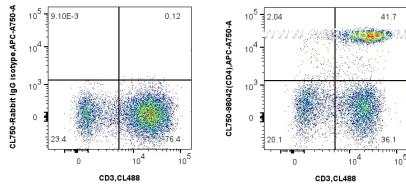
T: 4006900926

E: [Proteintech-CN@ptglab.com](mailto:Proteintech-CN@ptglab.com)

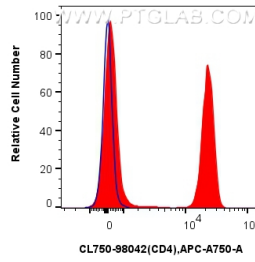
W: [ptgcn.com](http://ptgcn.com)

This product is exclusively available under Proteintech Group brand and is not available to purchase from any other manufacturer.

## Selected Validation Data



1x10<sup>6</sup> human PBMCs were surface stained with CoraLite® Plus 488 Anti-Human CD3 and 5 ul CoraLite® Plus 750 Anti-Human CD4 Rabbit Recombinant Antibody (CL750-98042, Clone: 240427E12) (right), or Isotype Control (left). Cells were not fixed. Lymphocytes were gated.



1x10<sup>6</sup> human PBMCs were surface stained with 5 ul CoraLite® Plus 750 Anti-Human CD4 Rabbit Recombinant Antibody (CL750-98042, Clone: 240427E12)(red), or Isotype Control (blue). Cells were not fixed. Lymphocytes were gated.