

CoraLite® Plus 750-conjugated IFI35

Recombinant antibody

Catalog Number: **CL750-83160-4**

Basic Information

Catalog Number:

CL750-83160-4

Size:

1000 µg/ml

Source:

Rabbit

Isotype:

IgG

Immunogen Catalog Number:

AG34653

GenBank Accession Number:

BC001356

GeneID (NCBI):

3430

UNIPROT ID:

P80217

Full Name:

interferon-induced protein 35

Calculated MW:

31 kDa

Observed MW:

31-35 kDa

Purification Method:

Protein A purification

CloneNo.:

240063E1

Recommended Dilutions:

WB 1:1000-1:4000

Excitation/Emission maxima wavelengths:

755 nm / 780 nm

Applications

Tested Applications:

WB

Species Specificity:

Human

Positive Controls:

WB : Jurkat cells, A549 cells, HeLa cells

Background Information

IFI35 (interferon induced protein 35), also known as IFP35. It is expected to be located in cytoplasm, nucleus and extracellular space. The protein is expressed in a wide range of cell types, including fibroblasts, macrophages, and epithelial cells. Involved in several processes, including macrophage activation involved in immune response; positive regulation of defense response; and regulation of signal transduction. And the calculated molecular weight of IFI35 is 31 kDa.

Storage

Storage:

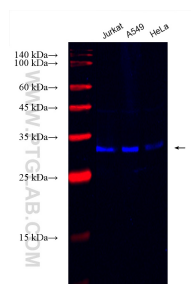
Store at -20°C. Avoid exposure to light. Stable for one year after shipment.

Storage Buffer:

PBS with 50% Glycerol, 0.05% Proclin300, 0.5% BSA, pH 7.3.

Aliquoting is unnecessary for -20°C storage

Selected Validation Data



Various lysates were subjected to SDS PAGE followed by western blot with CL750-83160-4 (IFI35 antibody) at dilution of 1:2000 incubated at room temperature for 1.5 hours.