

CoraLite® Plus 750-conjugated NEDD4 Recombinant antibody

Catalog Number: **CL750-83112**

Basic Information

Catalog Number: CL750-83112	GenBank Accession Number: BC152452	Purification Method: Protein A purification
Size: 1000 µg/ml	GeneID (NCBI): 4734	CloneNo.: 230478F1
Source: Rabbit	UNIPROT ID: P46934	Recommended Dilutions: WB 1:500-1:1000
Isotype: IgG	Full Name: neural precursor cell expressed, developmentally down-regulated 4	Excitation/Emission maxima wavelengths: 755 nm / 780 nm
Immunogen Catalog Number: AG16291	Calculated MW: 1319 aa, 149 kDa	
	Observed MW: 115 kDa	

Applications

Tested Applications: WB	Positive Controls: WB : C6 cells,
Species Specificity: human, mouse, rat	

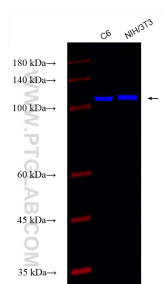
Background Information

NEDD4 and similar proteins discovered subsequently became a family of HECT ligases, comprising 9 human proteins including NEDD4, NEDD4-2 (NEDD4L), ITCH, SMURF1, SMURF2, WWP1, WWP2, NEDL1 and NEDL2. NEDD4 is a highly evolutionarily conserved protein from yeast to man, and was initially cloned as a highly expressed gene in the early embryonic brain. NEDD4 is frequently overexpressed in many different types of cancer, and decreased levels of NEDD4 can also be associated with cancer. It can be a potential therapeutic target for the treatment of human cancer.(PMID: 25527121). The human NEDD4 gene is located on chromosome 15q21.3 and comprises 30 exons (HGNC:7727) shown to encode a ~120 kDa protein. Otherwise there is a 75 kDa isoform in addition to full length NEDD4 (PMID: 24907641).

Storage

Storage:
Store at -20°C. Avoid exposure to light. Stable for one year after shipment.
Storage Buffer:
PBS with 50% Glycerol, 0.05% Proclin300, 0.5% BSA, pH 7.3.
 Aliquoting is unnecessary for -20°C storage

Selected Validation Data



Various lysates were subjected to SDS PAGE followed by western blot with CL750-83112 (NEDD4 antibody) at dilution of 1:500 incubated at room temperature for 1.5 hours.