

For Research Use Only

CoraLite® Plus 750-conjugated ANT1/2 Recombinant antibody

Catalog Number: CL750-83104



Basic Information

Catalog Number:

CL750-83104

Size:

1000 ug/ml

Source:

Rabbit

Isotype:

IgG

Immunogen Catalog Number:

AG11956

GenBank Accession Number:

BC056160

GeneID (NCBI):

292

UNIPROT ID:

P05141

Full Name:

solute carrier family 25
(mitochondrial carrier; adenine
nucleotide translocator), member 5

Calculated MW:

298 aa, 33 kDa

Observed MW:

32 kDa

Purification Method:

Protein A purification

CloneNo.:

230247B1

Recommended Dilutions:

WB 1:500-1:1000

Excitation/Emission maxima
wavelengths:

755 nm / 780 nm

Applications

Tested Applications:

WB

Species Specificity:

human, mouse, rat

Positive Controls:

WB : C6 cells, rat liver tissue, mouse liver tissue,
Neuro-2a cells

Background Information

Adenine nucleotide translocators (ANTs) are mitochondrial carrier proteins that exchange ATP and ADP between the cytoplasm and the mitochondrial matrix. Four isoforms of ANT were identified: ANT1 (encoded by SLC25A4) is highly expressed in different tissues; ANT2 (encoded by SLC25A5) is predominantly expressed in proliferating, regenerating, or undifferentiated cells; ANT3 is ubiquitously expressed; ANT4 is mainly expressed in testis and germ cells. This antibody recognizes both of ANT1 and ANT2. The predicted molecular weight of ANT1/2 protein is around 32 kDa. While 60 kDa protein can also be observed, which has been proposed as the dimer of ANT1/2. (22423112)

Storage

Storage:

Store at -20°C. Avoid exposure to light. Stable for one year after shipment.

Storage Buffer:

PBS with 50% Glycerol, 0.05% Proclin300, 0.5% BSA, pH 7.3.

Aliquoting is unnecessary for -20°C storage

For technical support and original validation data for this product please contact:

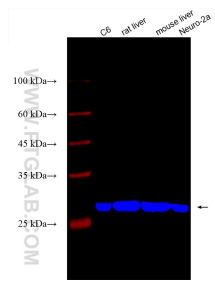
T: 4006900926

E: Proteintech-CN@ptglab.com

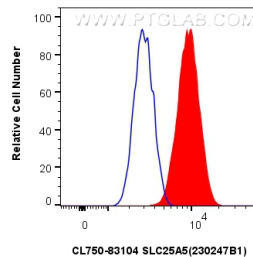
W: ptgcn.com

This product is exclusively available under Proteintech Group brand and is not available to purchase from any other manufacturer.

Selected Validation Data



Various lysates were subjected to SDS PAGE followed by western blot with CL750-83104 (SLC25A5 antibody) at dilution of 1:800 incubated at room temperature for 1.5 hours.



1x10⁶ PC-3 cells were intracellularly stained with 0.4 ug CoraLite® Plus 750-conjugated SLC25A5 Recombinant antibody (CL750-83104, Clone:230247B1)(red), or 0.4 ug Isotype Control (CL750-30000) (blue). Cells were fixed with 4% PFA and permeabilized with Flow Cytometry Perm Buffer (PF00011-C).