

For Research Use Only

CoraLite® Plus 750-conjugated ACAP1 Recombinant antibody

Catalog Number: CL750-82967

Featured Product



Basic Information

Catalog Number:

CL750-82967

Concentration:

1000 ug/ml

Source:

Rabbit

Isotype:

IgG

Immunogen Catalog Number:

AG34309

GenBank Accession Number:

BC018543

GeneID (NCBI):

9744

UNIPROT ID:

Q15027

Full Name:

ArfGAP with coiled-coil, ankyrin repeat and PH domains 1

Calculated MW:

740 aa, 82 kDa

Observed MW:

82-85 kDa

Purification Method:

Protein A purification

CloneNo.:

230370E1

Recommended Dilutions:

WB 1:1000-1:4000

Excitation/Emission maxima wavelengths:

755 nm / 780 nm

Applications

Tested Applications:

WB

Species Specificity:

human

Positive Controls:

WB : Jurkat cells,

Background Information

ACAP1, also named as Centaurin-beta-1, is a 740 amino acid protein, which is expressed Highly in lung and spleen. ACAP1 as a GTPase-activating protein (GAP) for ADP ribosylation factor 6 (ARF6) is required for clathrin-dependent export of proteins from recycling endosomes to trans-Golgi network and cell surface and required for regulated export of ITGB1 from recycling endosomes to the cell surface and ITGB1-dependent cell migration.

Storage

Storage:

Store at -20°C. Avoid exposure to light. Stable for one year after shipment.

Storage Buffer:

PBS with 50% glycerol, 0.05% Proclin300, 0.5% BSA, pH7.3

Aliquoting is unnecessary for -20°C storage

For technical support and original validation data for this product please contact:

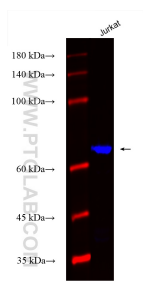
T: 4006900926

E: Proteintech-CN@ptglab.com

W: ptgcn.com

This product is exclusively available under Proteintech Group brand and is not available to purchase from any other manufacturer.

Selected Validation Data



Various lysates were subjected to SDS PAGE followed by western blot with CL750-82967 (ACAP1 antibody) at dilution of 1:2000 incubated at room temperature for 1.5 hours.