

For Research Use Only

# CoraLite® Plus 750-conjugated IGF2BP3 Recombinant antibody

Catalog Number: CL750-81805



## Basic Information

Catalog Number:

CL750-81805

Size:

1000 ug/ml

Source:

Rabbit

Isotype:

IgG

Immunogen Catalog Number:

AG6226

GenBank Accession Number:

BC065269

GeneID (NCBI):

10643

UNIPROT ID:

O00425

Full Name:

insulin-like growth factor 2 mRNA binding protein 3

Calculated MW:

64 kDa

Observed MW:

64 kDa

Purification Method:

Protein A purification

CloneNo.:

1L11

Recommended Dilutions:

WB 1:1000-1:8000

Excitation/Emission maxima wavelengths:

755 nm / 780 nm

## Applications

Tested Applications:

WB

Species Specificity:

human, mouse

Positive Controls:

WB : NIH/3T3 cells, HepG2 cells, K-562 cells

## Background Information

IGF2BP3, also named IMP3, KOC1, and VICKZ3, belongs to the RRM IMP/VICKZ family. It is one of the RNA binding proteins involved in mRNA localization and translational control. IGF2BP3 is expressed during embryogenesis, as well as in some malignant tumors. It can be used as an independent prognostic factor for osteosarcoma. Both isoforms (64kd and 22kd) of IGF2BP3 can be recognized by this antibody. And IGF2BP3 is nuclear and cytoplasm stains.

## Storage

Storage:

Store at -20°C. Avoid exposure to light. Stable for one year after shipment.

Storage Buffer:

PBS with 50% Glycerol, 0.05% Proclin300, 0.5% BSA, pH 7.3.

Aliquoting is unnecessary for -20°C storage

For technical support and original validation data for this product please contact:

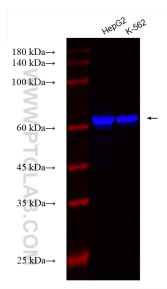
T: 4006900926

E: [Proteintech-CN@ptglab.com](mailto:Proteintech-CN@ptglab.com)

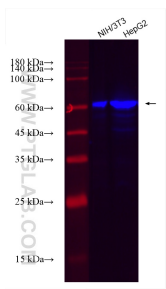
W: [ptgcn.com](http://ptgcn.com)

This product is exclusively available under Proteintech Group brand and is not available to purchase from any other manufacturer.

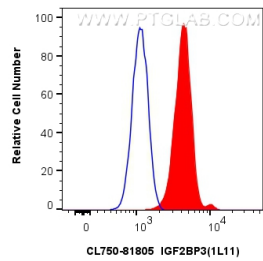
Selected Validation Data



Various lysates were subjected to SDS PAGE followed by western blot with CL750-81805 (IGF2BP3 antibody) at dilution of 1:4000 incubated at room temperature for 1.5 hours.



Various lysates were subjected to SDS PAGE followed by western blot with CL750-81805 (IGF2BP3 antibody) at dilution of 1:4000 incubated at room temperature for 1.5 hours.



1x10<sup>6</sup> HepG2 cells were intracellularly stained with 0.4 ug CoraLite® Plus 750-conjugated IGF2BP3 Recombinant antibody (CL750-81805, Clone:1L11)(red), or 0.4 ug Isotype Control (CL750-30000) (blue). Cells were fixed and permeabilized with Transcription Factor Staining Buffer Kit (PF00011).