

For Research Use Only

CoraLite® Plus 750-conjugated TGFB1 Recombinant monoclonal antibody

Catalog Number: CL750-81746-2

Featured Product



Basic Information

Catalog Number:

CL750-81746-2

Source:

Rabbit

Isotype:

IgG

Immunogen Catalog Number:

AG13591

GenBank Accession Number:

BC000125

GeneID (NCBI):

7040

UNIPROT ID:

P01137

Full Name:

transforming growth factor, beta 1

Calculated MW:

44 kDa

Observed MW:

44 kDa

Purification Method:

Protein A purification

CloneNo.:

230544B7

Recommended Dilutions:

WB: 1:1000-1:4000

FC (Intra): 0.40 ug per 10⁶ cells in a 100 µl suspension

Excitation/Emission maxima wavelengths:

755 nm / 780 nm

Applications

Tested Applications:

WB, FC (Intra)

Species Specificity:

human, mouse

Positive Controls:

WB : 4T1 cells, RAW 264.7 cells

FC (Intra) : HEK-293 cells,

Background Information

TGF Beta 1 (TGF- β 1) is a pleiotropic cytokine and a member of the TGF- β superfamily (including TGF- β 1, TGF- β 2, and TGF- β 3). It is encoded by the TGFB1 gene and acts as a secreted protein involved in controlling cell growth, proliferation, differentiation, and apoptosis. TGF- β 1 is produced by various cell types (e.g., platelets, lymphocytes, macrophages, epithelial cells, and inflammatory cells) and is secreted as a precursor requiring proteolytic activation to yield the mature, biologically active peptide. TGF- β 1 plays crucial roles in immune regulation, wound healing, fibrosis, and tissue remodeling (including cardiac injury and fibrosis). It also influences cancer progression by promoting epithelial-to-mesenchymal transition (EMT) and metastasis in tumors.

Storage

Storage:

Store at -20°C. Avoid exposure to light. Stable for one year after shipment.

Storage Buffer:

PBS with 50% glycerol, 0.05% Proclin300, 0.5% BSA, pH7.3

Aliquoting is unnecessary for -20°C storage

For technical support and original validation data for this product please contact:

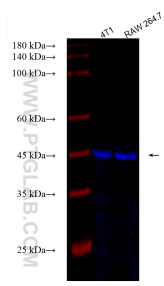
T: 4006900926

E: Proteintech-CN@ptglab.com

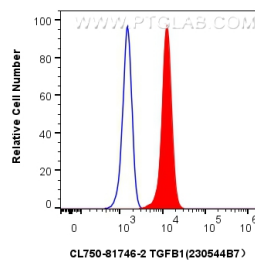
W: ptgcn.com

This product is exclusively available under Proteintech Group brand and is not available to purchase from any other manufacturer.

Selected Validation Data



Various lysates were subjected to SDS PAGE followed by western blot with CL750-81746-2 (TGFB1 antibody) at dilution of 1:2000 incubated at room temperature for 1.5 hours.



1×10^6 HEK-293 cells were intracellularly stained with 0.4 μ g CoraLite® Plus 750-conjugated TGFB1 Recombinant antibody (CL750-81746-2, Clone:230544B7)(red), or 0.4 μ g Isotype Control (CL750-30000) (blue). Cells were fixed with 4% PFA and permeabilized with Flow Cytometry Perm Buffer.