

For Research Use Only

# CoraLite® Plus 750-conjugated CHMP4B Recombinant antibody

Catalog Number: CL750-81691-2



## Basic Information

Catalog Number:

CL750-81691-2

Size:

1000 ug/ml

Source:

Rabbit

Isotype:

IgG

Immunogen Catalog Number:

AG4544

GenBank Accession Number:

BC033859

GeneID (NCBI):

128866

UNIPROT ID:

Q9H444

Full Name:

chromatin modifying protein 4B

Calculated MW:

224 aa, 25 kDa

Observed MW:

25 kDa

Purification Method:

Protein A purification

CloneNo.:

2N22

Recommended Dilutions:

WB 1:500-1:1000

Excitation/Emission maxima

wavelengths:

755 nm / 780 nm

## Applications

Tested Applications:

WB, FC (Intra)

Species Specificity:

human

Positive Controls:

WB : Jurkat cells, HuH-7 cells

## Background Information

CHMP4B (charged multivesicular body protein 4b) is a human homologue of yeast Snf7p (also named Vps32p) and a member of CHMP family which is implicated in multivesicular body (MVB) sorting. The CHMP proteins are components of ESCRT-III (endosomal sorting complex required for transport III), a complex involved in degradation of surface receptor proteins and formation of endocytic multivesicular bodies. Among seven CHMP family members, only CHMP4 has been found to interact with Alix, a multifunctional adaptor protein in various cellular functions. This antibody is highly specific to the CHMP4B and it doesn't cross-react with other CHMPs as well as other CHMP4s (CHMP4A and CHMP4C). CHMP4B can be detected 25-33 kDa by post-translational modification (PMID:26490837).

## Storage

Storage:

Store at -20°C. Avoid exposure to light. Stable for one year after shipment.

Storage Buffer:

PBS with 50% Glycerol, 0.05% Proclin300, 0.5% BSA, pH 7.3.

Aliquoting is unnecessary for -20°C storage

For technical support and original validation data for this product please contact:

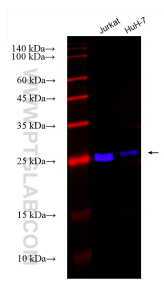
T: 4006900926

E: [Proteintech-CN@ptglab.com](mailto:Proteintech-CN@ptglab.com)

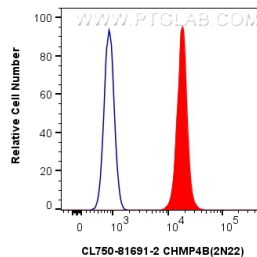
W: [ptgcn.com](http://ptgcn.com)

This product is exclusively available under Proteintech Group brand and is not available to purchase from any other manufacturer.

## Selected Validation Data



Various lysates were subjected to SDS PAGE followed by western blot with CL750-81691-2 (CHMP4B antibody) at dilution of 1:800 incubated at room temperature for 1.5 hours.



$1 \times 10^6$  HepG2 cells were intracellularly stained with 0.4  $\mu$ g CoraLite® Plus 750-conjugated CHMP4B Recombinant antibody (CL750-81691-2, Clone:2N22)(red), or 0.4  $\mu$ g Isotype Control (CL750-30000) (blue). Cells were fixed with 4% PFA and permeabilized with Flow Cytometry Perm Buffer (PF00011-C).