

For Research Use Only

CoraLite® Plus 750-conjugated MYL7 Recombinant antibody

Catalog Number: CL750-81570



Basic Information

Catalog Number:

CL750-81570

Size:

1000 ug/ml

Source:

Rabbit

Isotype:

IgG

Immunogen Catalog Number:

AG11058

GenBank Accession Number:

BC027915

GeneID (NCBI):

58498

UNIPROT ID:

Q01449

Full Name:

myosin, light chain 7, regulatory

Calculated MW:

175 aa, 19 kDa

Observed MW:

19 kDa

Purification Method:

Protein A purification

CloneNo.:

2C5

Recommended Dilutions:

WB 1:1000-1:4000

Excitation/Emission maxima

wavelengths:

755 nm / 780 nm

Applications

Tested Applications:

WB

Species Specificity:

human, mouse, rat

Positive Controls:

WB : rat heart tissue, mouse heart tissue

Background Information

MYL7, also known as myosin light chain 2a (MLC2a), is essential for heart development. The expression of MYL7 in heart is predominately restricted to the atrium. So its expression has been considered as useful marker for atrial cardiomyocytes.

Storage

Storage:

Store at -20°C. Avoid exposure to light. Stable for one year after shipment.

Storage Buffer:

PBS with 50% Glycerol, 0.05% Proclin300, 0.5% BSA, pH 7.3.

Aliquoting is unnecessary for -20°C storage

For technical support and original validation data for this product please contact:

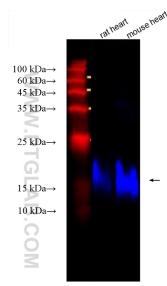
T: 4006900926

E: Proteintech-CN@ptglab.com

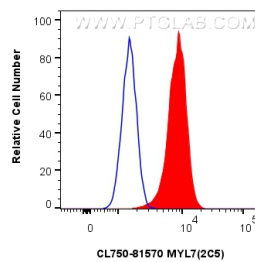
W: ptgcn.com

This product is exclusively available under Proteintech Group brand and is not available to purchase from any other manufacturer.

Selected Validation Data



Various lysates were subjected to SDS PAGE followed by western blot with CL750-81570 (MYL7 antibody) at dilution of 1:2000 incubated at room temperature for 1.5 hours.



1x10⁶ C2C12 cells were intracellularly stained with 0.4 ug CoraLite® Plus 750-conjugated MYL7 Recombinant antibody (CL750-81570, Clone:2C5) (red), or 0.4 ug Isotype Control (CL750-30000) (blue). Cells were fixed with 4% PFA and permeabilized with Flow Cytometry Perm Buffer (PF00011-C).