

For Research Use Only

CoraLite® Plus 750-conjugated c-Cbl

Monoclonal antibody



Catalog Number: **CL750-66576**

Featured Product

Basic Information

Catalog Number:

CL750-66576

Size:

1000 µg/ml

Source:

Mouse

Isotype:

IgG1

Immunogen Catalog Number:

AG23033

GenBank Accession Number:

BC132733

GeneID (NCBI):

867

UNIPROT ID:

P22681

Full Name:

Cas-Br-M (murine) ecotropic retroviral transforming sequence

Calculated MW:

906 aa, 100 kDa

Observed MW:

100-120 kDa

Purification Method:

Protein A purification

CloneNo.:

2F6D1

Recommended Dilutions:

WB 1:1000-1:4000

Excitation/Emission maxima

wavelengths:

755 nm / 780 nm

Applications

Tested Applications:

WB

Species Specificity:

Human, mouse

Positive Controls:

WB : Raji cells, mouse brain tissue, A431 cells

Background Information

c-Cbl (Casitas B-lineage lymphoma) is a critical regulator that controls immature or follicular helper T cell development, B cell development, immune tolerance, angiogenesis, or tumorigenesis (PMID: 33962939). c-Cbl also plays a pivotal role in regulating dendritic cell (DC) function via negatively modulating IL-12 production after Toll-like receptor (TLR) stimulation (PMID: 21799517).

Storage

Storage:

Store at -20°C. Avoid exposure to light. Stable for one year after shipment.

Storage Buffer:

PBS with 50% Glycerol, 0.05% Proclin300, 0.5% BSA, pH 7.3.

Aliquoting is unnecessary for -20°C storage

For technical support and original validation data for this product please contact:

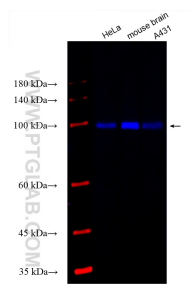
T: 4006900926

E: Proteintech-CN@ptglab.com

W: ptgcn.com

This product is exclusively available under Proteintech Group brand and is not available to purchase from any other manufacturer.

Selected Validation Data



Various lysates were subjected to SDS PAGE followed by western blot with CL750-66576 (c-Cbl antibody) at dilution of 1:2000 incubated at room temperature for 1.5 hours.