

# CoraLite® Plus 750-conjugated XLF

## Monoclonal antibody

Catalog Number: **CL750-66552**

### Basic Information

**Catalog Number:**

CL750-66552

**Size:**

1000 µg/ml

**Source:**

Mouse

**Isotype:**

IgG2b

**Immunogen Catalog Number:**

AG2496

**GenBank Accession Number:**

BC030986

**GeneID (NCBI):**

79840

**UNIPROT ID:**

Q9H9Q4

**Full Name:**

nonhomologous end-joining factor 1

**Calculated MW:**

35 kDa

**Observed MW:**

37 kDa

**Purification Method:**

Protein A purification

**CloneNo.:**

1F8C7

**Recommended Dilutions:**

WB 1:1000-1:4000

**Excitation/Emission maxima wavelengths:**

755 nm / 780 nm

### Applications

**Tested Applications:**

WB

**Species Specificity:**

Human

**Positive Controls:**

WB : HeLa cells, HEK-293 cells

### Background Information

XRCC4-like factor (XLF), also known as Cernunnos and NHEJ1, is a protein encoded by the human NHEJ1 gene and an important repair factor for DNA double-strand breaks. NHEJ is a well-known mechanism for the repair of double-strand breaks (DSBs), a lethal type of DNA damage in mammalian cells. It basically utilizes a group of enzymes to take hold of the ends of a broken DNA molecule, create a bridge between them, and subsequently re-ligate the broken DNA molecule.

### Storage

**Storage:**

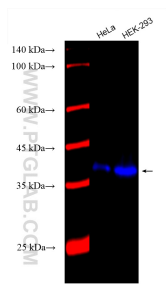
Store at -20°C. Avoid exposure to light. Stable for one year after shipment.

**Storage Buffer:**

PBS with 50% Glycerol, 0.05% Proclin300, 0.5% BSA, pH 7.3.

Aliquoting is unnecessary for -20°C storage

## Selected Validation Data



Various lysates were subjected to SDS PAGE followed by western blot with CL750-66552 (XLF antibody) at dilution of 1:2000 incubated at room temperature for 1.5 hours.